

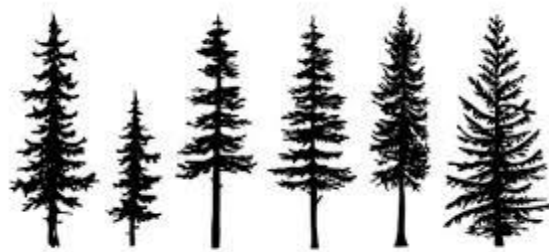
# BLACK RIVER FALLS, WISCONSIN OUTDOOR RECREATION PLAN



2024-2029







# City of Black River Falls Outdoor Recreation Plan

PREPARED BY THE MISSISSIPPI RIVER REGIONAL PLANNING COMMISSION  
UNDER THE DIRECTION OF THE BLACK RIVER FALLS DEPARTMENT OF PARKS  
AND RECREATION



Special Thanks To:

The citizens of Black River Falls, The Council, Brad Chown,  
Jarod Meyer, and Dain Crawford





# Table of Contents

Introduction .....	1
Goals and Objectives.....	2
City of Black River Falls Overview .....	4
Definitions.....	4
State / DNR Recreation Standards.....	5
Public Participation / Survey Results .....	6
Property Inventory.....	7
City of Black River Falls Owned Parks and Recreation .....	8
Other Recreation Facilities .....	23
School Recreation Facilities and Areas .....	25
State Outdoor Recreation Facilities.....	26
State Natural Areas (SNAs).....	27
State Fishery Areas .....	28
Local Priorities and Objectives.....	29
Implementation Priorities .....	29
Projects From Park Review .....	30
Other Projects.....	30
Natural Resources.....	31
Demographics .....	31
State Review of Recreation Demand (SCORP) .....	34
Planning Process .....	36
Previous Plans.....	36
Appendix A: Grant/Funding Opportunities.....	37
Wisconsin Department of Natural Resources .....	37
Rural Development Administration (USDA - Rural Development).....	37
Transportation Assistance Program (TAP) Wisconsin DOT .....	37
Community Development Block Grant, Department of Administration.....	38
Grant Finder.....	38
Appendix B: Maps .....	39
Map 1. Black River Falls Parks.....	39
Map 2. State Forests And Natural Areas .....	40
Map 3. State Fishery Areas.....	41
Map 4. Transportation Arterials .....	42
Map 5. Soils in Black River Falls .....	43

Map 6. Topography .....	44
Appendix C: Outdoor Recreation Survey and Results.....	50
Appendix D: Adoption Resolution.....	64
Appendix E: Tables.....	45
Table 1. Population & Future Projections .....	45
Table 2. Age Characteristics.....	46
Table 3. Soil Types & Definitions .....	47
Table 4. Employment.....	49
Table 5. Employment Age Characteristics .....	49





## Introduction

### Outdoor Recreation in the City of Black River Falls

The City of Black River Falls recognizes the need for a comprehensive outdoor recreation plan. Concerned citizens understand the need for local outdoor recreation facilities and are aware that the needs within Black River Falls change with time. This plan is intended to serve as a guide to Black River Falls in the development of specific recreation programs and long-range objectives. The plan is also intended to assist in budgetary considerations when planning for the maintenance and further development of recreation facilities. The recommendations and proposals found within this plan are aimed at the continued preservation, acquisition, development, and improvements of Black River Falls' outdoor recreation facilities. It is Black River Falls' responsibility to reference this plan's recommendations as they relate to the growth, development, and maintenance of Black River Falls' outdoor recreation resources.

This plan is also intended to assure Black River Falls' eligibility to participate in various state, county, and federal programs for funding, acquisition, and other support available for outdoor recreation.



*Mothers, Nicole, Anneliese, and Ashley were strangers with one common goal. To spruce up a playground in their community that needed a makeover.*

*With donations from the community and a \$300,000 matching grant from the Lunda Charitable Fund. The playground opened in October of 2023.*

*"Our hope was that we're able to bring together people of all abilities and that they can play side by side and get to know each other and have exposure and build those relationships..." -- Ashely Segelhurst.*



## Goals and Objectives

The City of Black River Falls' objective in preparing this Outdoor Recreation Plan is twofold; the first is to provide an orderly framework for guiding future development of Black River Falls' own recreation properties; and the second is to provide a single source document in which Black River Falls' plan can be viewed to provide an overview of existing outdoor recreation facilities and opportunities for future planning purposes for neighboring municipalities and Jackson County.

To accomplish this, the following goals have been identified:

### Goal 1: Continue to maintain and improve the City's outdoor park and recreation facilities.

*Objectives:*

- Work with community officials and residents to identify new and existing facilities that meet the needs of all citizens, including children, teenagers, the elderly, and individuals with mobility challenges.
- Provide and maintain park facilities and equipment to better facilitate outdoor recreation activities.
- Maintain and improve the accessibility of the City's existing outdoor recreation facilities.
- Monitor the overall condition of the City's outdoor recreation amenities annually and establish an Outdoor Recreation Improvements Program.

### Goal 2: Protect and enhance the unique natural resources within Black River Falls.

*Objectives:*

- Maintain awareness of the vulnerability of the City's valuable resources.
- Provide facilities that enable recreational users the opportunity to enjoy the City's natural resources without causing any adverse impacts on these resources.

### Goal 3: Use the City's resources efficiently and enhance funding opportunities for park and recreational needs of the city.

*Objectives:*

- Evaluate recreational facility usage to establish priorities for improvements.
- Monitor state and federal grant programs for future park development. Apply for funds if appropriate.
- Provide adequate facilities at existing parks before any additional park land acquisition.
- Determine the costs and benefits of all development of a recreational area prior to undertaking the project.





#### **Goal 4: Promote recreation to better address public health and wellness and ADA accessibility.**

*Objectives:*

- Identify and replace park equipment that can better comply with the Americans with Disabilities Act guidelines.
- Improve the coordination and cooperation of the City and other public or private entities in developing and using all current and future outdoor recreation areas.

#### **Goal 5: Provide residents with safe and reliable recreation equipment throughout the city park system.**

*Objectives:*

- Replace old and/or damaged recreation equipment in all city parks.
- Continually monitor and maintain existing park equipment to ensure its longevity and safety.
- Have a full-time employee of Black River Falls Parks and Recreation Department obtain Certified Playground Safety Inspector status through the National Recreation and Park Association.
- Identify and replace all playground equipment that does not meet Consumer Product Safety Commission (CPSC) or American Society for Test and Materials (ASTM) safety guidelines.

#### **Goal 7: Establish and maintain a city-wide urban forestry program with help from the street department to manage the city's urban forest.**

*Objectives:*

- The plan should regulate the planning, removal, and management of trees on public lands in the city, while making the city eligible for state and federal urban forestry grant programs.
- Remove dead trees and/or treat diseased trees on public lands within the city.
- Establish and maintain a continuous tree planting and tree maintenance program for public lands in the city.
- Seek "Tree City USA" status for the city.

#### **Goal 8: Provide residents with multi-purpose trail systems that utilize environmental corridors and provide linkages between parks, schools, and other appropriate features within and outside of the city.**

*Objectives:*

- Secure an engineering firm to develop a plan to fix and improve the existing Foundation Trail.
- Secure additional land that offers linkage opportunities between the existing trail and other parks or schools.
- Develop trail systems that have multiple uses and are barrier free.
- Work with the county and other groups to connect city trails with existing and upcoming county trail projects.



## City of Black River Falls Overview

Black River Falls is located on the northeast edge of the Driftless Area, a region which includes parts of Wisconsin, Minnesota, Iowa, and Illinois. “Drift” refers to the deposits of various sediment left behind by retreating glaciers. During the last ice age, this region was untouched by glacial drift, preserving the Driftless Area’s characteristic topography of scenic bluffs and river valleys. The Black River cuts through the city and continues to the southwest where it converges with the Mississippi River. The city originally used the river for sawmill operations, and now relies on it as a source of hydroelectric power and recreation.

### Definitions

To assist in the interpretation and implementation of the Black River Falls Outdoor Recreation Plan, the following terms have been identified.

- Community Park – A park designed to serve several municipalities or neighborhoods and to provide many recreational opportunities for people of all ages.
- Neighborhood Park – A park usually less than a few acres in size, designed to serve the needs of the surrounding neighborhood.
- Neighborhood Playground – A facility often provided in conjunction with a community school. It is designed to serve the needs of the surrounding neighborhood and can accommodate a variety of informal or active athletic activities.
- Specialized Recreation Area – Areas restricted by design to certain uses and may not always be available for use by the public. In some cases, they may serve a small segment of the community’s population. Golf courses, historic sites, and conservancy areas are examples of specialized recreation areas.
- Open Space – Primarily land and water that is owned or managed by federal, state, or local governments, or a conservancy organization that is preserved for public use. Examples include wetlands, woodlands, wildlife refuges, prairies/meadows, rock outcroppings, etc.
- Pathways and Parkways – Spaces that are connections related to travel such as trail or water trail providing connectivity for recreation and/or transportation purposes.
- Recreation Trail – A travel way established through construction or use and is passable by the following, including but not limited to foot traffic, bicycles, cross country skis, off road recreation vehicles, snowmobiles, etc.



## State / DNR Recreation Standards

Identifying the number of people a park system currently serves, as well as the maximum capacity the system can serve, is key to measuring the adequacy of a City's Park system. The Wisconsin Department of Natural Resources suggests the following standards for designing recreation facilities:

Neighborhood Playground: 1-to-2 acres per 1,000 people  
Community Park: 5-to-8 acres per 1,000 people  
Specialized Recreation Area: as needed.

For the Black River Falls Outdoor Recreation Plan, these standards will be used as guidelines for future recreational planning. The Mississippi River Regional Planning Commission (MRRPC) is pleased to report that the current parks in Black River Falls exceed the state standards.



## Public Participation / Survey Results

The city distributed a survey during the process of updating its Outdoor Recreation Plan. The survey was made available on the City's website and shared on social media platforms hosted by the city and the Mississippi River Regional Planning Commission. With over 500 responses to the survey, it is clear that Black River Falls' community members are invested in the success of their outdoor recreation program.

As mentioned in the Recreation Demand section of the plan, survey respondents identified Lunda Park, the Foundation Trail, the Lunda Center, the Aquatic Center, and Mills Park as some of their favorite recreational facilities. 40.6% of respondents said they used the Foundation Trail one or more times a month, with 58 respondents saying they used it at least once a week. Less than 10% of respondents said that they never use the Foundation Trail.

Among the highest rated activities were playground activities, swimming, hiking, and fishing. Respondents were given the opportunity to write-in some of their favorite recreational activities. Several comments focused on golf, disc golf, figure skating/hockey, and rollerblading/skateboarding.

This survey also gathered input on community needs, as referenced in the Recreational Demand section of the plan. Many respondents noted the need for improvements regarding the Splash Pad/Aquatic Center. The Aquatic Center is regarded as a favorite place for many survey respondents, and they would like to see this asset maintained and improved so that all community members can continue to enjoy it. There were also several comments regarding community events. Respondents would like to see events that occur on a consistent basis (i.e., annually, monthly, etc.), as well as events marketed for a variety of ages (families, teenagers, adults, older adults).

Black River Falls' community members demonstrate a sense of pride for their recreation facilities. They understand the significant impact these facilities and events have on community resilience. Survey respondents have identified important outdoor recreation needs, but also recognize that their involvement as a community is necessary for outdoor recreation opportunities to be maintained and improved. In the coming years, as the Parks and Recreation Department prepares for new developments, facility improvements, community event planning, and other projects, it is crucial that they look to the community for further input and involvement.



Please note the entire survey appears in Appendix D.



# Property Inventory

Maintaining adequate recreation facilities is important for any municipal parks and recreation department. The following is an inventory of Black River Falls’ owned parks and properties. Accompanying each property is a set of icons which identify the amenities and activities associated with each park. After reviewing the city facilities, this inventory covers non-city owned recreation facilities, such as County or State-owned facilities/parks. Maps of Outdoor Recreation Opportunities can be found in Appendix B.

## INVENTORY LEGEND:

	ADA Accessible		Playground Area		Historic Marker		Walking/Hiking
	Restrooms		Leashed Pet Area		Wildlife Viewing		Biking
	Campground		Boat Launch		Hunting		Snowshoeing
	RV Camping		Paddle Sports		Night Sky Viewing		Horse Trails
	Picnic Area		Swimming Area		Foraging		Snowmobiling
	Shelter		Fishing		ATV/UTV		



## City of Black River Falls Owned Parks and Recreation

An interactive map of our parks is [HERE](#).

### Lunda Community Park



Located on the western edge of the city, [Lunda Community Park](#) has 43 acres and boasts many amenities. The park has four picnic shelters to accommodate various types of functions. The upper and lower shelters can accommodate 80 to 150 guests and may be reserved by contacting City Hall. The park is well groomed and contains a nature pond, native plant areas, ornamental trees, and many floral areas. There are nearly 2 miles of paved trails for your hiking and biking enjoyment. A beautiful bandshell is available to rent and also plays host to the summer concert in the park series. Other Park amenities include two ballfields, a skate park and the Hoffman Family Aquatic Center. Lunda Park is also home to the new 10,000 square foot Black River Falls All-Abilities Playground.

Facilities	
<ul style="list-style-type: none"> <li>• 10,000 Sq. Ft. All Abilities Playground</li> <li>• 4 Picnic Shelters</li> <li>• Nature Pond</li> <li>• Two Miles of Paved Trails</li> <li>• Band Shell</li> <li>• Fishpond</li> </ul>	<ul style="list-style-type: none"> <li>• Two Baseball Fields</li> <li>• Skate Park</li> <li>• Ornamental Trees</li> <li>• Native Plant and Floral Areas</li> <li>• Sand volleyball court</li> <li>• Playground</li> </ul>

Programs	
<ul style="list-style-type: none"> <li>• Summer Concert Series</li> <li>• Festival in the Park</li> </ul>	<ul style="list-style-type: none"> <li>• Back to School Bash</li> <li>• Little League</li> </ul>

Improvements	
<ul style="list-style-type: none"> <li>• Landscape and General Maintenance</li> <li>• Refinish Infields (Ballpark)</li> <li>• Repair Features, Concrete, and Retaining Walls (Skate Park)</li> </ul>	<ul style="list-style-type: none"> <li>• Renovation of Landscape Beds</li> <li>• Replace Older Roofing</li> <li>• <a href="#">All Abilities Playground</a></li> <li>• Repair Retaining Walls</li> </ul>







## Hoffman Aquatic Center



The [Hoffman Aquatic Center](#) is located within and managed by the City of Black River Falls, the pool area is equipped with a heated pool that has various features, including two body slides, two drop chutes, umbrella spray, arch spray, geysers, and tumble buckets, as well as 60 lounge and deck chairs for relaxation. Concession stands are available for food and drinks. Additionally, the pool area features a sand play area with a playground and a sand volleyball court. Those who prefer to picnic can take advantage of the picnic shelters located near the playground and the fishpond, which are situated outside the pool area.

Facilities	
<ul style="list-style-type: none"> <li>• Two Body Slides</li> <li>• Two Drop Chutes</li> <li>• Umbrella and Arch Spray</li> <li>• Geysers</li> </ul>	<ul style="list-style-type: none"> <li>• Concession Stands</li> <li>• Playground</li> <li>• 60 Lounge and Deck Chairs</li> <li>• Tumble Buckets</li> </ul>

Programs	
<ul style="list-style-type: none"> <li>• Special programming through season</li> </ul>	

Improvements	
<ul style="list-style-type: none"> <li>• Landscape and General Maintenance</li> <li>• Resurface Pool</li> <li>• Repair Gutter System</li> <li>• Replace Slide Pumps</li> </ul>	<ul style="list-style-type: none"> <li>• Replace Filters as Needed</li> <li>• Replace Pool Pump</li> <li>• Replace Controller</li> </ul>





## Foundation Trailhead



The scenic 4.1-mile [Foundation Trail](#) circles the City of Black River Falls. Completed in 2000, many residents and visitors use the trail for walking, running, and biking. The trail begins at Field of Honor Park, following the Town Creek in the north, before cutting back towards Lunda Community Park in the west and Pine View Care Center in the south, and completing its loop following the Black River toward Field of Honor. The route passes by several city parks, the high school, the fairgrounds, and the Black River Falls' Downtown. The 10-foot-wide paved trail has two underpasses, lights, a bridge, benches, and picnic tables. Many regard the trail as a breathtakingly beautiful journey around the city.

Facilities	
<ul style="list-style-type: none"> <li>• 4.1 miles of 10-foot-wide paved trails</li> <li>• Lights</li> <li>• Bridges</li> </ul>	<ul style="list-style-type: none"> <li>• Benches</li> <li>• Picnic tables</li> </ul>
Programs	
<ul style="list-style-type: none"> <li>• Haunted Trail</li> </ul>	<ul style="list-style-type: none"> <li>• Fun Run (Jackson in Action)</li> </ul>
Improvements	
<ul style="list-style-type: none"> <li>• Landscape and General Maintenance</li> <li>• Repair and Redesign Trails</li> </ul>	<ul style="list-style-type: none"> <li>• Connect Trail to Other Trails</li> </ul>





## Field of Honor Park (Deer Park and Chamber Park)

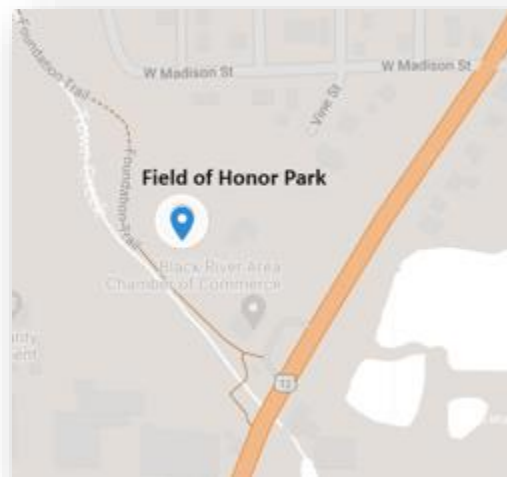


Located behind the Chamber of Commerce and Visitor’s Center, [Field of Honor Park](#) serves as the trail head for the four-mile-long Foundation Trail that loops the city. The Field of Honor Veteran’s tribute is the center point of the park, and the Karner Blue Garden Club spends many hours each summer maintaining several floral areas around the monument and surrounding areas. This park is also home to the Lions and Jaycee Picnic Shelters as well as playground equipment.

Facilities	
<ul style="list-style-type: none"> <li>• Field of Honor Veteran’s Tribute</li> <li>• Floral Areas</li> </ul>	<ul style="list-style-type: none"> <li>• Lions and Jaycee Picnic Shelters</li> <li>• Playground Equipment</li> </ul>

Programs	
<ul style="list-style-type: none"> <li>• Potential Memorial Day</li> </ul>	

Improvements	
<ul style="list-style-type: none"> <li>• Landscape and General Maintenance</li> <li>• Replace Lion’s Shelter</li> </ul>	<ul style="list-style-type: none"> <li>• Replace Playground Equipment</li> </ul>





## Rock Springs Park

[Rock Springs Park](#) is a beautiful 15-acre park nestled in a wooded setting located on South 5<sup>th</sup> Street. This park is home to the newly re-designed Jaden Gjersest Memorial Disc Golf Course. The course has 9 holes, a practice basket, concrete tee boxes and many challenges for players at all skill levels.

Facilities	
<ul style="list-style-type: none"><li>• 9-hole disc golf course</li><li>• Practice basket</li></ul>	<ul style="list-style-type: none"><li>• Concrete Tee Boxes</li></ul>

Programs	
<ul style="list-style-type: none"><li>• Some Golf Tournaments</li></ul>	<ul style="list-style-type: none"><li>• Potential League</li></ul>

Improvements	
<ul style="list-style-type: none"><li>• Landscape and General Maintenance</li></ul>	<ul style="list-style-type: none"><li>• Replace Playground Equipment</li></ul>





## Sig Peterson Park (Scout Park)

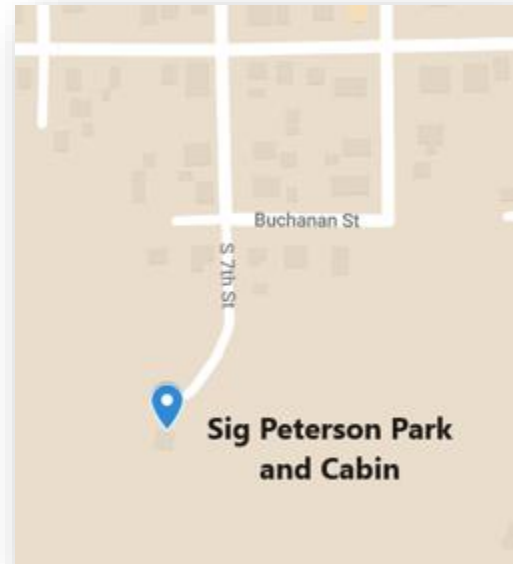


[This Cabin and Park](#) is located just to the west of Rock Springs Park. It is home to a cabin that can be rented for private functions. It is also home to a couple holes of the Jaden Gjersest Memorial Disc Golf Course that starts in Rock Springs Park.

Facilities	
<ul style="list-style-type: none"><li>• Cabin for rent for private functions</li></ul>	<ul style="list-style-type: none"><li>• Disk Golf (from another park)</li></ul>

Programs	
<ul style="list-style-type: none"><li>• Cabin Rental</li></ul>	<ul style="list-style-type: none"><li>• Scout Events</li></ul>

Improvements	
<ul style="list-style-type: none"><li>• Landscape and General Maintenance</li></ul>	<ul style="list-style-type: none"><li>• Regular Cabin Maintenance</li></ul>







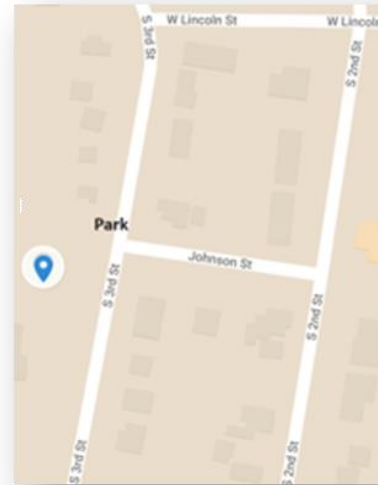
## Park at 3<sup>rd</sup> and Johnson (Cheyney Park)



A small neighborhood park located on South 3rd Street and Johnson that has an older swing set, see-saw and a picnic table.

Facilities	
<ul style="list-style-type: none"><li>• Swing set</li><li>• Table</li></ul>	<ul style="list-style-type: none"><li>• See-Saw</li></ul>

Improvements	
<ul style="list-style-type: none"><li>• Landscape and General Maintenance</li></ul>	<ul style="list-style-type: none"><li>• Replace Playground Equipment</li></ul>







## Al Young Park



This park is located next to the levee along the banks of the Black River. There are park restrooms and playground equipment here. The park is also home to a reservable picnic shelter that holds 8 picnic tables.

Facilities	
<ul style="list-style-type: none"><li>• Restrooms</li><li>• Playground Equipment</li></ul>	<ul style="list-style-type: none"><li>• Reservable picnic shelter with eight picnic tables</li></ul>

Improvements	
<ul style="list-style-type: none"><li>• Landscape and General Maintenance</li></ul>	<ul style="list-style-type: none"><li>• Replace Playground Equipment</li></ul>





## Mills Park (Hippo Park)



This four-acre park is the most used of the city's neighborhood parks as it is located in the heart of the city's main residential area. The park is home to a giant bronze hippopotamus play structure along with several other pieces of playground equipment installed in September of 2023. The new equipment includes climbing structures, slides, and various types of swings. In the winter, Mills Park is a winter recreation area. It has a sledding hill and outdoor ice rink.

Facilities	
<ul style="list-style-type: none"><li>• Giant Bronze Hippopotamus Play Structure</li><li>• Other playground equipment<ul style="list-style-type: none"><li>○ Climbing Structures</li><li>○ Slides</li><li>○ Other Types of Swings</li></ul></li></ul>	<ul style="list-style-type: none"><li>• Sledding Hill</li><li>• Outdoor Ice Rink</li></ul>
Programs	
<ul style="list-style-type: none"><li>• Winter Ice Rink</li></ul>	
Improvements	
<ul style="list-style-type: none"><li>• Landscape and General Maintenance</li></ul>	<ul style="list-style-type: none"><li>• Rest Rooms (ADA Compliant)</li></ul>



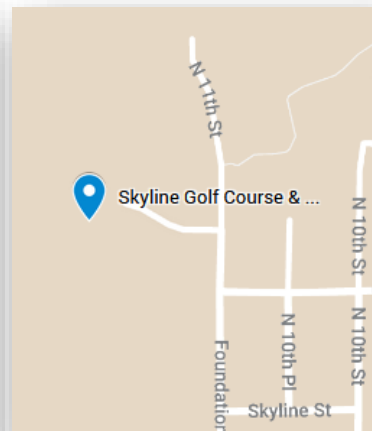


## Skyline Golf Course & Skyline Park



Skyline Golf Course is owned by the City of Black River Falls. However, it is leased by a private operator. [Skyline Golf Club / Course](#) (NOT managed by the city) is an 18-hole public golf course dating back to 1957. It is a beautiful combination of wide-open fairways on the front 9, with elevation changes, and a back 9 that cuts through a thick pine forest and follows a meandering creek. There is a Clubhouse and Restaurant on the site. There is a very small park adjacent to the course.

Facilities	
<ul style="list-style-type: none"><li>• Clubhouse and Restaurant</li><li>• Small Park</li></ul>	<ul style="list-style-type: none"><li>• 18 Hole Golf Course</li></ul>
Programs	
<ul style="list-style-type: none"><li>• Golf and Social Events</li></ul>	
Improvements	
<ul style="list-style-type: none"><li>• Maintained by Independent operator</li></ul>	<ul style="list-style-type: none"><li>• Landscape and General Maintenance</li></ul>





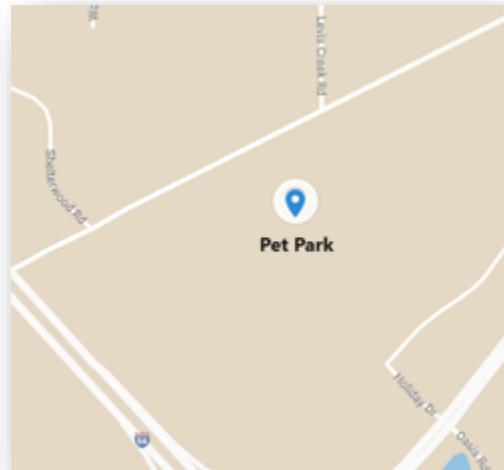
## Pet Park



This six-acre off leash dog area is located just east of I-94 on Vaudreil Road. It is completely fenced in so dogs can roam freely.

Facilities	
<ul style="list-style-type: none"><li>Fenced in off leash dog park</li></ul>	

Improvements	
<ul style="list-style-type: none"><li>New Small Dog Area</li><li>Landscape and General Maintenance</li></ul>	<ul style="list-style-type: none"><li>Replace Fencing</li></ul>





## Marks Fields

Located near the Foundation Trail on the city's Northwest side, this athletic complex has been home to Jackson County Little League for over 65 years. Amenities include two ball fields, Steve Peterson Field, and Bob Teeples Field, concession stand, restrooms and batting cages. Black River Falls Little League uses these and other fields in the community for their events.

Facilities	
<ul style="list-style-type: none"><li>• Steve Peterson Field</li><li>• Concession Stand</li><li>• Batting Cages</li></ul>	<ul style="list-style-type: none"><li>• Bob Teeples Field</li><li>• Restrooms</li></ul>

Programs	
<ul style="list-style-type: none"><li>• Little League</li></ul>	<ul style="list-style-type: none"><li>• Special Events</li></ul>

Improvements	
<ul style="list-style-type: none"><li>• Landscape and General Maintenance</li><li>• Additional Storage</li></ul>	<ul style="list-style-type: none"><li>• Batting Cages</li></ul>







## Jackson County Fair Grounds / Park

Fair Park is a city park that is the home to the [Jackson County Fair](#). When the Park is not being used for the fair it hosts several horse, livestock, and small animal shows. It consists of 4 barns, an indoor arena, outdoor arena, grandstands, and an indoor ice arena. It also has a camping area that has electrical hookups at 32 sites.

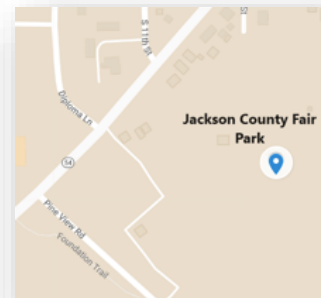
Facilities	
<ul style="list-style-type: none"><li>• Four Barns / Buildings</li><li>• Indoor Arena</li><li>• Camping Facility</li></ul>	<ul style="list-style-type: none"><li>• Outdoor Arena</li><li>• Ice Arena (seasonal)</li></ul>

Programs	
<ul style="list-style-type: none"><li>• Jackson County Fair</li><li>• Horse, Livestock, and Small Animal Shows</li></ul>	<ul style="list-style-type: none"><li>• Special Events (can be rented)</li><li>• Some Camping</li></ul>

Improvements	
<ul style="list-style-type: none"><li>• Landscape and General Maintenance</li><li>• Building updates and maintenance</li><li>• Potential Better Use of Campsites</li></ul>	<ul style="list-style-type: none"><li>• Recommendations from Jackson County Agricultural Society, an all-volunteer board dedicated to the tradition that is the county fair.</li></ul>







## Milt Lunda Memorial Ice Arena (MLMA)

Located at Fair Park, this arena has one full size sheet of ice mid-September through March. MLMA is home to [Black River Falls Youth Hockey](#), [Black River Falls Figure Skating Club](#) and [High School boys' and girls' hockey teams](#). April through August, the facility can be rented for weddings and other community functions. The Jackson County Fair uses this building for exhibitors in early August.

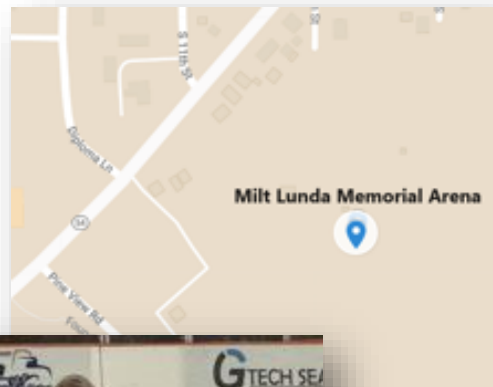
Facilities	
<ul style="list-style-type: none"><li>• Ice Sheet</li></ul>	<ul style="list-style-type: none"><li>• Seating</li></ul>

Programs	
<ul style="list-style-type: none"><li>• Hockey (see description)</li></ul>	<ul style="list-style-type: none"><li>• Figure Skating</li></ul>

Improvements	
<ul style="list-style-type: none"><li>• Landscape and General Maintenance</li></ul>	<ul style="list-style-type: none"><li>• Potential Expansion</li></ul>







## Other Recreation Facilities

The City of Black River Falls identified these facilities as being of interest. While these facilities are neither owned nor maintained by the city, residents use them to meet their recreation needs and as such these facilities should be inventoried.

### Lunda Community Center

Conveniently located in Black River Falls on Highway 54, the Lunda Community Center features an Indoor Waterpark, Fitness Center, Senior Center, Field House, Program Gym, Climbing Wall, Golf Simulator, classes for all ages and more. Day passes, rentals and memberships available. Lunda Community Center offers:

Indoor Waterpark: Current Channel, Whirlpool, Zero Depth Water Playground, Water Slides, Lap Lanes

Fieldhouse: Basketball Courts, Volleyball Courts, Pickleball Courts

Fitness Center: Cardio Equipment, Pin & Plate Based Circuits, Free Weights, Fitness Studios

Golf Simulator: 69 Championship Courses

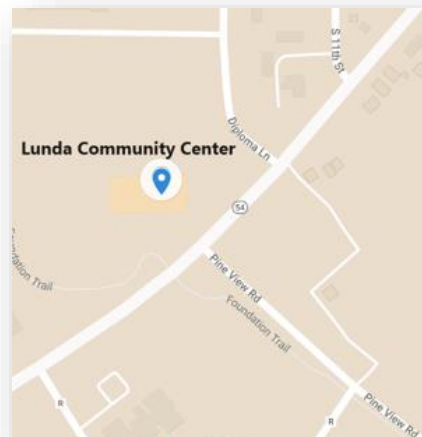
Climbing Wall: 5 TRUBLUE Autobelays

Indoor Suspended Track: (1/7 Mile)

Multi-Purpose Rooms

Racquetball Courts

Senior Center



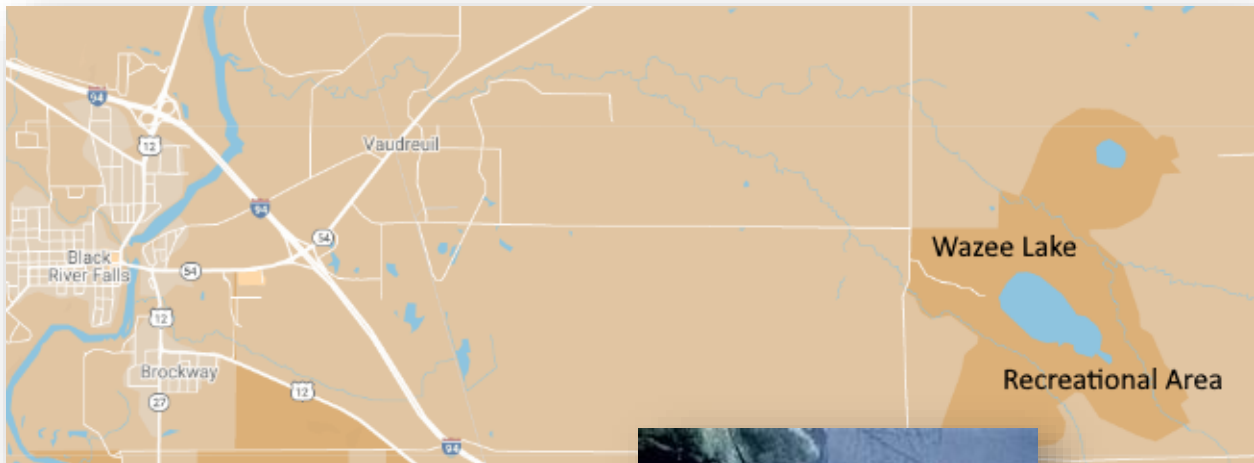


## Wazee Lake Recreation Area

[Wazee Lake Recreation Area](#) is Jackson County's largest County Park. The focal point of the 1300-acre recreation area is Wazee Lake. The lake is 146 acres in size and is the clearest and deepest inland lake in Wisconsin. Wazee Lake has become the most popular scuba diving site in the Midwest, attracting more than 1,000 divers annually. It is also host to a two-tier fishery including two species of trout, smallmouth bass, bluegills, and walleye. The lake is non-motorized to ensure protection of the pristine water quality, and to promote a "quiet" recreational experience.

The area offers rustic campsites with pit toilets and water, 9 miles of hiking trail, 3 miles of surfaced bicycle trail, a large beach, picnic areas, ADA compliant fishing pier, boat launch and several scenic vistas of the surrounding forest land.

Jackson County has several plans to expand camping, access, and trails in the area. There is currently a project under consideration to pave the trail around the lake and then connect the Wazee Lake Trail System with the Foundation Trail around the City of Black River Falls. This may include a system to cross I-94. These projects would be joint efforts with Jackson County, the city and the State of Wisconsin and are currently documented in the Jackson County Outdoor Recreation Plan.



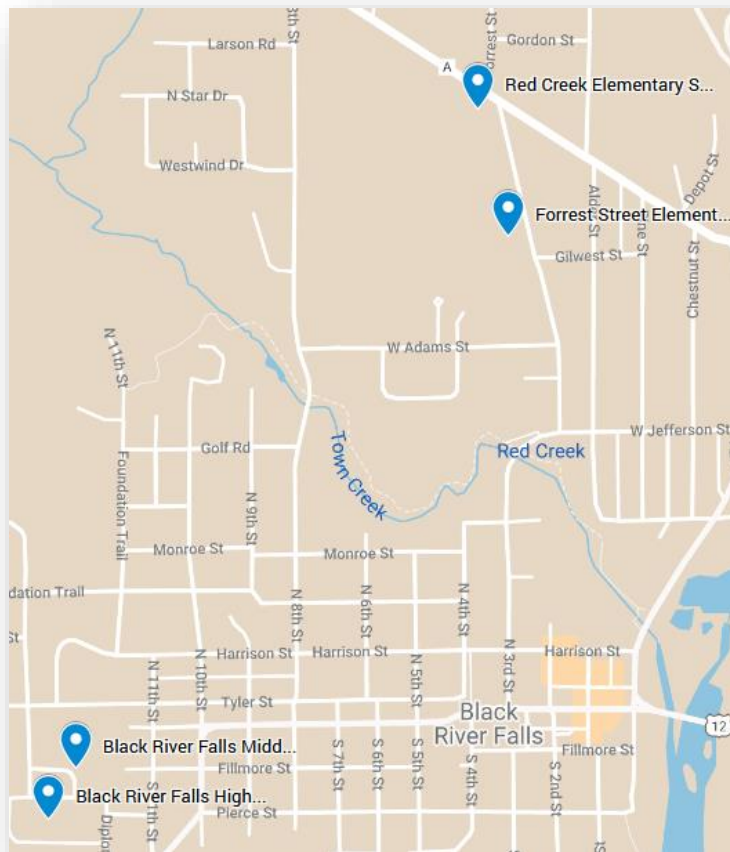


## School Recreation Facilities and Areas

The City of Black River Falls is in the [Black River Falls School District](#). These schools offer additional playgrounds, ball fields, and other recreational facilities. The following schools are located within the City of Black River Falls:

- Forrest Street Elementary
- Red Creek Elementary
- Black River falls Middle School
- Black River Falls High School

Public School Districts are entities that are allowed to apply for Federal Land and Water Conservation Funds (LAWCON). Most schools have playground equipment that is available for use by the general public throughout the year. There are baseball diamonds at the middle school, high school, and the elementary schools.







## State Outdoor Recreation Facilities

### Black River State Forest and The Black River

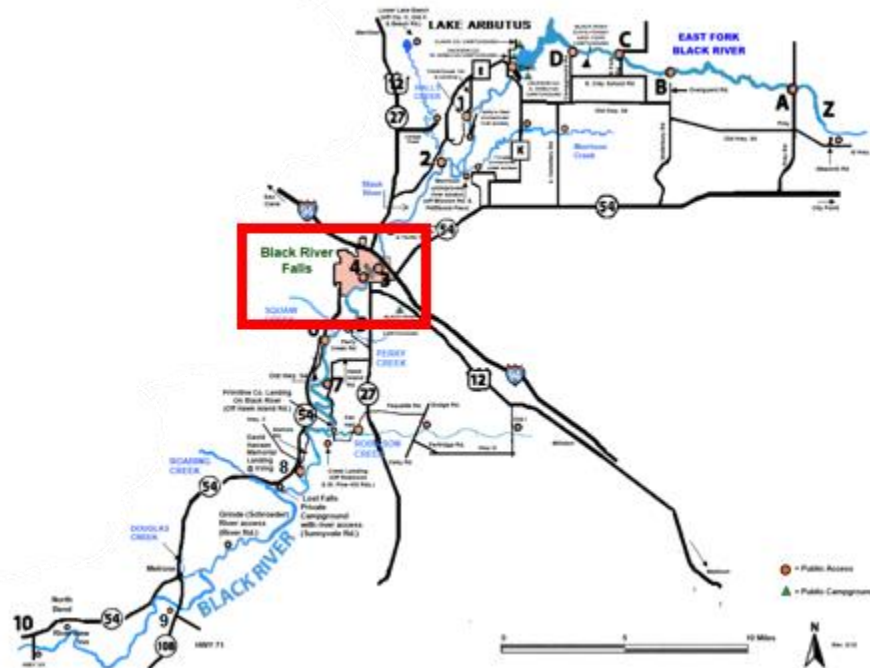


Located east of Black River Falls and south of Wisconsin Highway 54, [Black River State Forest](#) is a 15-to-20-minute drive from the city. Two forks of the Black River flow through this 68,000-acre forest comprised of pine and oak woods under high sandstone abutments. This central Wisconsin property offers many recreational opportunities, including camping, canoeing, hunting, hiking, skiing and ATV riding. Visitors may even see elk roaming the forest. Elk were released in 2015 and 2016 after being absent from the area for over 125 years.

The Black River and East Fork of the Black River offer excellent canoeing and kayaking opportunities. The East Fork is scenic with some mild rapids and moderately rocky areas. Paddling on the East Fork is not recommended when water levels are low.

The Black River from Lake Arbutus to North Bend on State Highway 54 is an excellent canoeing river from late spring through fall. The river provides a scenic trip through sparsely populated areas and great opportunities for fishing.

Because there is a dam on the Black River within the City of Black River Falls, canoeing is considered safe only when all gates are closed. It is not recommended when three or more dam gates are open and requires average or better skills when only two gates are open.







### State Natural Areas (SNAs)

State Natural Areas (SNAs) are areas that are being preserved by the DNR to protect outstanding examples of Wisconsin's native landscape. 24 sites in Jackson County have been designated as SNAs. This plan highlights the 5 SNAs closest to Black River Falls. In general, Hiking, Fishing, Cross country skiing, Hunting, Trapping, Pets, Wildlife viewing are allowed on all DNR-owned SNA lands. Exceptions to this list of public uses are posted with signs on site.

#### Catfish Eddy Terraces SNA

Catfish Eddy Terraces are on the east bank of the Black River. They have a diverse ecosystem with both terrestrial and aquatic elements. There is a northern dry-mesic forest along the river's slopes. Within these forests are species such as white and red pines, red oak, white oak, and red maple. There are also many springs, spring runs, moist cliffs, and seepages. To the south of the terraces is Perry Creek which supports rare bird species like the Louisiana Waterthrush. Catfish Eddy Terraces earned the designation of State Natural Area in 2010.

#### Castle Mound Pine Forest SNA

Castle Mound Pine Forest SNA is located to the east of Brockway, just south of Highway 12. The SNA includes a hiking trail and an observation tower. A variety of tree species are featured here, including Hill's oak, white oak, paper birch, red maple, large-toothed aspen, and jack pine. Castle Mound is known for some unique bird sightings, including the red-breasted nuthatch, solitary vireo, black-throated green warbler, and pine warbler, all of which are more common in northern Wisconsin. Castle Mound Pine Forest was one of the first locations to become a Wisconsin State Natural Area, receiving this designation in 1952.

#### Upper Black River SNA

Upper Black River was designated a State Natural Area in 2010. It ranges from Hatfield Dam to Black River Falls, and includes Morrison Creek, Valentine Creek, and Dickey Creek. It features habitats like floodplain forests, dry-mesic forests, sandstone cliffs, and high-gradient streams. There are rare species here, including the uncommon Louisiana waterthrush, and it is a highly protected area due to its rich biodiversity and unique landscapes.

#### Bauer-Brockway Barrens SNA

Bauer-Brockway Barrens have jack pine and hills oak on top of sand prairie and shrubs. There are diverse butterflies and moth species in this area. Indian Grave Creek runs through this area, bringing it more diversity. It is owned by the DNR and Jackson County and was designated a state natural area in 1997.

#### Brockway Ponds SNA

Brockway Ponds contain 5 separate ponds which have sand exposed on their shorelines. It is a sensitive ecosystem so a single disruption to the water could cause a major impact on the species living there. It is owned by Jackson County and was designated a State Natural Area in 2010.



### State Fishery Areas

These lands protect the watershed, and provide for compatible recreational uses such as hunting, hiking, and cross-country skiing. Fishery areas along streams, rivers, and lakes protect water quality by reducing erosion and run-off and improve habitat and fishing opportunities. The City of Black River Falls has three State Fishery Areas nearby.

#### Smith Pond

**Size:** 95.73 acres

**Location:** In Jackson County, Hixton Township; T 22N, R 5W, sections 29 and 30.

**Recreation:** Hunting, trapping, hiking, cross country skiing, wildlife viewing, fishing, bird watching, and berry picking.

**Habitat:** Emergent wet meadow wetland, forested wetland, lowland shrub wetland, and cultural sites.

#### Tank Lake

**Size:** 502.84 acres

**Location:** N7608 Charcoal Rd, Hixton, WI 54635

**Recreation:** Hunting, trapping, hiking, snowmobiling trail, cross country skiing, wildlife viewing, fishing, bird watching, berry picking, and canoeing.

**Habitat:** Includes wet meadow wetland, forested wetland, lowland shrub wetland and cultural sites.

#### North Branch Trempealeau River Fishery Area

**Size:** 183.45 acres

**Location:** N9112 WI-95, Hixton, WI 54635

**Recreation:** Hunting, trapping, hiking, snowmobiling trail, cross country skiing, wildlife viewing, fishing, bird watching, berry picking, and canoeing.

**Habitat:** Scrub wetland, forested wetland.



## Local Priorities and Objectives

### Implementation Priorities

### The City of Black River Falls' Priorities, Objectives and Action Items for 2024-2029

These priorities, goals and objectives, and action items were developed through a process of discussion and collaboration with diverse stakeholders of the City of Black River Falls. Priority will be given to projects that it is believed both have the ability to receive funding, having public support, and most importantly will improve the outdoor recreation opportunities of the citizens of Black River Falls and encourage those from outside the city to discover what we have to offer. These objectives will focus on lands that the City of Black River Falls owns itself, and on ways that Black River Falls can partner with local, state, federal, and other government agencies partners to enhance outdoor recreation opportunities.

#### Review of Goals from Earlier in Plan

Goal 1: Continue to maintain and improve the City's outdoor park and recreation facilities.

Goal 2: Protect and enhance the unique natural resources within Black River Falls.

Goal 3: Use the City's resources efficiently and enhance funding opportunities for park and recreational needs of the city.

Goal 4: Promote recreation to better address public health and wellness and ADA accessibility.

Goal 5: Provide residents with safe and reliable recreation equipment throughout the city park system.

Goal 7: Establish and maintain a city-wide urban forestry program with help from the street department to manage the city's urban forest.

Goal 8: Provide residents with multi-purpose trail systems that utilize environmental corridors and provide linkages between parks, schools, and other appropriate features within and outside of the city.

#### Our Partners

Recreation in Black River Falls is a team effort. The community must work with the Schools, County, State, Surrounding Communities, The Chamber and Downtown, Jackson in Action, Service Organizations, Leagues, Clubs, Private Entities, and the Businesses who all work together to enhance the outdoor experience in our city. We could not and cannot do it without you. Thank You!



## Projects From Park Review

Project	Estimated Cost	Priority
Automatic Locks on park restroom doors	10-15k	0-3 years
Repair features, concrete and retaining walls at Skate Park	30-40k	0-3 years
Repair retaining walls at Lunda Park	20-30k	0-3 years
Engineered re-design and repairs to certain locations on Foundation Trail	75-150k	0-3 years
New small dog area and replace damaged fencing at Pet Park	40-60k	0-3 years
Resurface pool surface at Hoffman Family Aquatic Center	250-300k	0-3 years
Repair Gutter System at Hoffman Family Aquatic Center	150k-200k	0-3 years
Replace slide pumps at Hoffman Family Aquatic Center	60-80k	0-3 years
Replace Filters at Hoffman Family Aquatic Center	150-200k	0-3 years
Re-finish infields at Lunda Park ballfields	15-25k	0-3 years
Replacement of Playground equipment in Cheyney Park	10-20k	0-3 years
Replacement of roof on Karner Blue Building	30-50k	0-3 years
Replace Lions Shelter at Field of Honor Park	100-150k	3-6 years
Replace pool pump at Hoffman Family Aquatic Center	50k-75k	3-6 years
Replace pool controller at Hoffman Family Aquatic Center	10-15k	3-6 years
Acquire land to expand boat ramp parking	100k-200k	3-6 years
Add covered vehicle port to Parks shop	20-30k	3-6 years
Renovation of Lunda Park landscape beds	75-100k	3-6 years
Replacement of Playground equipment in Rock Springs Park	20-30k	3-6 years
Replacement of Playground equipment in Al Young Park	30-50k	3-6 years
Replacement of Playground equipment at Field of Honor Park	30-50k	3-6 years
New Compressors at MLMA	500k	6-10 years
Replace roofs on buildings in Lunda Park	50-100k	6-10 years
Acquire land for trail extension to Elementary schools on Forest St	50-100k	6-10 years
Connect Foundation trail with trails in Lollapalooza development	???	6-10 years

## Other Projects

There is currently a project under consideration to pave the trail around the lake and then connect the Wazee Lake Trail System with the Foundation Trail around the City of Black River Falls. This may include a system to cross I94. These projects would be joint efforts with Jackson County, the city and the State of Wisconsin and are currently documented in the Jackson County Outdoor Recreation Plan.

Our community recreation survey (included below) also listed several ideas from the citizens. The City of Black River Falls, the Recreation Department, and other Providers will review these observations and may make recommendations or develop additional projects based on this input.



## Natural Resources

### Size & Location

Black River Falls has a total area of 4.23 square miles, of which 4.19 square miles is land and 0.04 square miles is water. The city is located within the center of Jackson County, in Western Wisconsin.

### Climate

The Black River Falls climate is continental, characterized by warm summers, cold winters, and moisture throughout the year. The coldest month of the year is January, with an average daily high temperature of 27°F. The warmest month of the year is July, with an average daily high temperature of 83°F. Black River Falls annually receives approximately 34 inches of precipitation. Outdoor recreation in Black River Falls can be highly dependent on the season. Changes in weather patterns have caused Black River Falls to experience seasonal variations in temperature and precipitation. As Black River Falls plans for future outdoor recreation needs, the effects of changing weather patterns will be considered to sustain local park systems for the future.

### Soils

Black River Falls has considerable soil variation. This variation is documented in the table's appendix. The most common soil type, making up 17.7% of the city, is Tarr sand on 1 to 6 percent slopes. The second most common soil type, making up 8.3% of the city, is Merrilan fine sandy loam on 0 to 3 percent slopes. The third most common soil type, making up 8.2% of the city, is Seaton silt loam, driftless valley on 6 to 12 percent slopes.

### Topography

The topography of Black River Falls is diverse, with a mix of flat plains and rolling hills. The city is located on the banks of the Black River, which flows through the area and has carved out a wide valley over time. The river is surrounded by steep bluffs and cliffs, which provide scenic views and recreational opportunities. The lack of glaciated terrain explains these steep slopes, which are characteristic of the Driftless Area. A topography map appears in Appendix B.

### Surface Water

The main surface water in the city is the eponymous Black River. This river has extensive use within the community, including recreation opportunities such as fishing hydroelectric power generation. Of concern is contamination – specifically polychlorinated biphenyls (PCBs) – however, the DNR is monitoring the situation.

## Demographics

### Population

Table 1, Appendix C details the population trends in Black River Falls over the last three decades. Black River Falls' population has remained relatively stable since 1990. In 2020, Black River Falls had a population of 3,523, a change of less than one percent from its 1990 population. During the same time frame, Wisconsin's population increased 20.5%, and Jackson County's increased 27.5%. Black River Falls'



future population growth may warrant further development of recreation opportunities and park expansions. If the City and County continue to grow at a gradual pace, the City of Black River Falls should focus on improving existing facilities to better suit the needs of the population. The County's potential for future growth may increase demand for recreation in Black River Falls, providing access to recreation opportunities that may not be available in other parts of the county. The Parks and Recreation department should take this into consideration when developing new projects.

### Population Age

According to the 2022 American Community Survey (see Table 2, Appendix C), Black River Falls had a median age of 43.2. This is comparable with Jackson County's median age of 42.2. Black River Falls' median age is slightly higher than both the state and national median ages, 39.9 and 39.0, respectively. 20.2% of Black River Falls' population is under the age of 18, and this is on par with the county, state, and national percentages. However, Black River Falls' population over the age of 60 represents 36.9% of the total population. This is higher than the percentages at the county (27.6%), state (24.6%), and national (23.8%) levels. This is typical for a predominantly rural area and should be considered when determining future outdoor recreation needs. Black River Falls is increasing in age and will continue to experience a growth in its older population. Facilities that can be utilized by many ages should be prioritized. See Table 2 for more details.

### Disability Characteristics

According to the [2022 American Community Survey 5-Year Estimates](#), 16.3% of the Black River Falls population has a disability. 25.6% of residents between 35 and 64 years old have a disability. 7.5% of residents between 65 and 74 years old have a disability. Among those 75 and older, 54.4% have a disability. This should be kept in mind for outdoor recreation facilities – both assessing the accessibility of current facilities and designing new facilities to be as accessible as possible. Efforts are already being made towards this endeavor, with the All-Inclusive Playground Project at Lunda Park “aiming to provide inclusive and multi-generational playground equipment” to meet community needs.





### Median Household Income

According to the [2022 American Community Survey 5-Year Estimates](#), median household income in Black River Falls in 2022 was \$42,798, or 60.2% of the State median household income, \$70,996. 37.7% of households in Black River Falls made less than \$25,000.

### Urban/Rural

According to the 2020 Census, Black River Falls has [1,748 housings units](#) and a [population of 3,523](#). The City does not meet the [Census Bureau's criteria](#) to be defined as an urban area. However, Black River Falls has somewhat of an urban character, with many residents living in relatively small lots. Small lots limit the capacity for outdoor recreation on one's personal property. Residents that live on smaller lots are more dependent upon a public park system which offers a broad range of outdoor opportunities including hunting, hiking, camping, and picnicking.

### Land Use

According to the [2023 Statement of Assessment for Jackson County](#), 84.1% of land in Black River Falls is residential. 14.2% of land is commercial. All other land uses make up 1.7% of the land in Black River Falls.

### Employment

According to the 2022 American Community Survey 5-Year Estimates, the largest industries in Black River Falls in terms of employment were manufacturing at 15.9%, retail trade at 14.4%, and educational services & health care & social assistance at 12.4%.



# State Review of Recreation Demand (SCORP)

## Introduction

The State of Wisconsin has determined that the planning of outdoor recreation facilities is of utmost importance for the development of healthy and viable communities. Three important parts of recreation planning are:

- (1) Determine the demand for several types of outdoor recreation activity,
- (2) Inventory the existing facilities which accommodate outdoor recreation activity,
- (3) Evaluate the existing facilities and determine the need for improvements or additions to meet the existing and anticipated recreational demand.

## Recreational Demand

As we progress into a new century, events and issues that influence outdoor recreation in the future are changing. Issues which will influence future outdoor recreation activities include:

- Land use patterns are shifting,
- Ownership patterns in rural areas are changing,
- Budgets for operation and maintenance of recreation resources are not expected to increase.



For guidance on the demand for recreational outdoor activities, a review of the [Wisconsin Statewide Comprehensive Outdoor Recreation Plan \(SCORP\) 2019-2023](#) was conducted. During the development of the SCORP, numerous Wisconsin residents were questioned as to how often they participate in various recreation activities. Data was collected at 8 regional levels; Black River Falls lies in the Mississippi River Corridor.

# 5

This plan lays out **five** overarching goals for outdoor recreation.

-  1. Boost participation in outdoor recreation
-  2. Grow partnerships
-  3. Provide high-quality experiences
-  4. Improve data to enhance visitor experiences and benefits
-  5. Enhance funding and financial stability



**Favorite Places to Visit Based on Public Input (SCORP)**

Of the people providing input, the majority (67%) selected the quality of trails as one of the top four most crucial factors in determining their favorite property to visit. This mirrors the results from the Black River Falls survey. Wisconsinites have historically participated in outdoor recreation at higher rates than the national average.

Seventy-seven percent of SCORP respondents believe more outdoor recreational opportunities are needed in the Mississippi River Corridor Region. The opportunity that was most frequently selected as needed in the Mississippi River Corridor Region was more trails for hiking, walking, or running, which was selected by nearly half of respondents.

**Future Recreation Needs from State Plan (SCORP)**

Based on the 2019-2023 SCORP, the Mississippi River Corridor Region rates recreational activities as high, medium, or low relative to needs of the region. The groupings are as follows:

Future Recreation Needs - High	Future Recreation Needs - Medium	Future Recreation Needs - Low
Bicycling – touring/road riding	ATV/UTV riding	Dog sledding/ skijoring
Bicycling – mountain/off road	Bicycling – fat tire/snow	Dog training
Bird or wildlife watching	Fishing – lake from shore	Dog Trialing
Camping – developed	Fishing – ice fishing	Geocaching
Camping – primitive	Four-wheel vehicle driving	Off-highway motorcycle riding
Canoeing or kayaking	Horseback riding	Rock climbing
Cross Country Skiing	Horse cart driving	Sailing, windsurfing, rowing, etc.
Dog Walking	Hunting – migratory birds	Snowmobiling
Fishing – lake from vessel	Hunting – small game	Scuba diving/snorkeling
Fishing – river from vessel	Hunting – turkey	Whitewater rafting
Fishing – stream or shore wading	Motorboating (waterski, tubing)	
Gather mushrooms, berries, etc.	Swimming in lakes and rivers	
Hiking, walking, trail running	Target shooting – archery	
Hunting – big game	Target shooting – firearms	
Nature photography	Trapping	
Nature based education programs		
Picnicking		
Snowshoeing		
Visit a beach, beach walking		



### Planning Process

The City of Black River Falls' Outdoor Recreation Planning Committee worked with Mississippi River Regional Planning Commission (MRRPC) to develop this plan. Together they created a survey to solicit public input on outdoor recreation facilities and activities offered in Black River Falls. These surveys were posted on MRRPC's website, the City of Black River Falls' Website, and local social media outlets.

Information from the survey was taken to develop local priorities and objectives for the future planning of Black River Falls' outdoor recreation facilities. The list of priorities and objectives will be referenced frequently by City staff to secure funding for projects. This plan will be reviewed and updated every 5 years to keep priorities and objectives current.

### Previous Plans

The following plans intersect with and have contributed to the City of Black River Falls' Outdoor Recreation Plan. It should be noted that this plan is the first Outdoor Recreation Plan the City of Black River Falls has had.

- City of Black River Falls Comprehensive Plan 2010-2020
- Jackson County Comprehensive Plan 2010-2030
- Jackson County Hazard Mitigation Plan 2020-2024
- Jackson County Outdoor Recreation Plan 2022-2026



## Appendix A: Grant/Funding Opportunities

Funding Programs: Funding for recreational development can come from several sources, both public and private. Most funding for this type of development comes from public local funds. Primarily, local funds come from several sources including the sale of bonds, allocations from the local tax base, and donations from individuals and organizations. Non-local funding can come from a number of sources, either in the form of a grant or a loan. Currently, the DNR, the U.S. Fish and Wildlife, and Rural Development (RDA) provide competitive funding relating to outdoor recreation. We have also included Grant Finder a service to find potential grants and funding.

### Wisconsin Department of Natural Resources



The [Wisconsin Department of Natural Resources Grant Programs](#) is a main source of funding for outdoor recreation facilities. [The Knowles-Nelson Stewardship Fund](#) was created in 1989 to preserve important natural communities, protect water quality and fisheries, and expand opportunities for outdoor recreation., administered by the DNR, is a fund designed to provide opportunities for outdoor recreation, protect land sensitive to environmental degradation, conserve and restore wildlife habitat and protect water quality. As a prerequisite to the following WDNR funding programs, applicants must first submit a comprehensive outdoor recreation plan, such as this plan, or a master plan that has been approved by resolution by a local governing unit, or

a plan of a higher unit of government. Applicants submitting qualifying comprehensive outdoor recreation plans or master plans may receive eligibility to apply for funding for up to five years. The DNR's priority for funding is land acquisition, followed by facility development.

### Rural Development Administration (USDA - Rural Development)

The [USDA](#) provides a loan program, which provides Community Facility Project Loans to applicants with areas of less than 20,000 people, for the purpose of constructing, enlarging, or improving community facilities for health care, public safety, or public services. These loans should be secured with bonds or notes pledging taxes, assessments, or revenues. There are many Rural Development programs that are different areas of community development that could provide loans, or possibly grants, if criteria are met for income and utility rates, for facilities in the communities that are smaller in size.



### Transportation Assistance Program (TAP) Wisconsin DOT



The [Wisconsin Department of Transportation TAP program](#) provides funds for non-traditional projects within programs called the Safe Routes to School Program, Transportation Enhancements, and the Bicycle and Pedestrian Facilities Program. The TAP program provides up to 80 percent reimbursement grants for approved projects that target transportation-oriented pedestrians and bicycle planning and construction projects.





## Community Development Block Grant, Department of Administration

The [Wisconsin CDBG program](#) funds support infrastructure and facility projects for communities. Examples of eligible projects include improvements, repairs, or expansions of streets, drainage systems, water and sewer systems, sidewalks, and community centers.



### Grant Finder



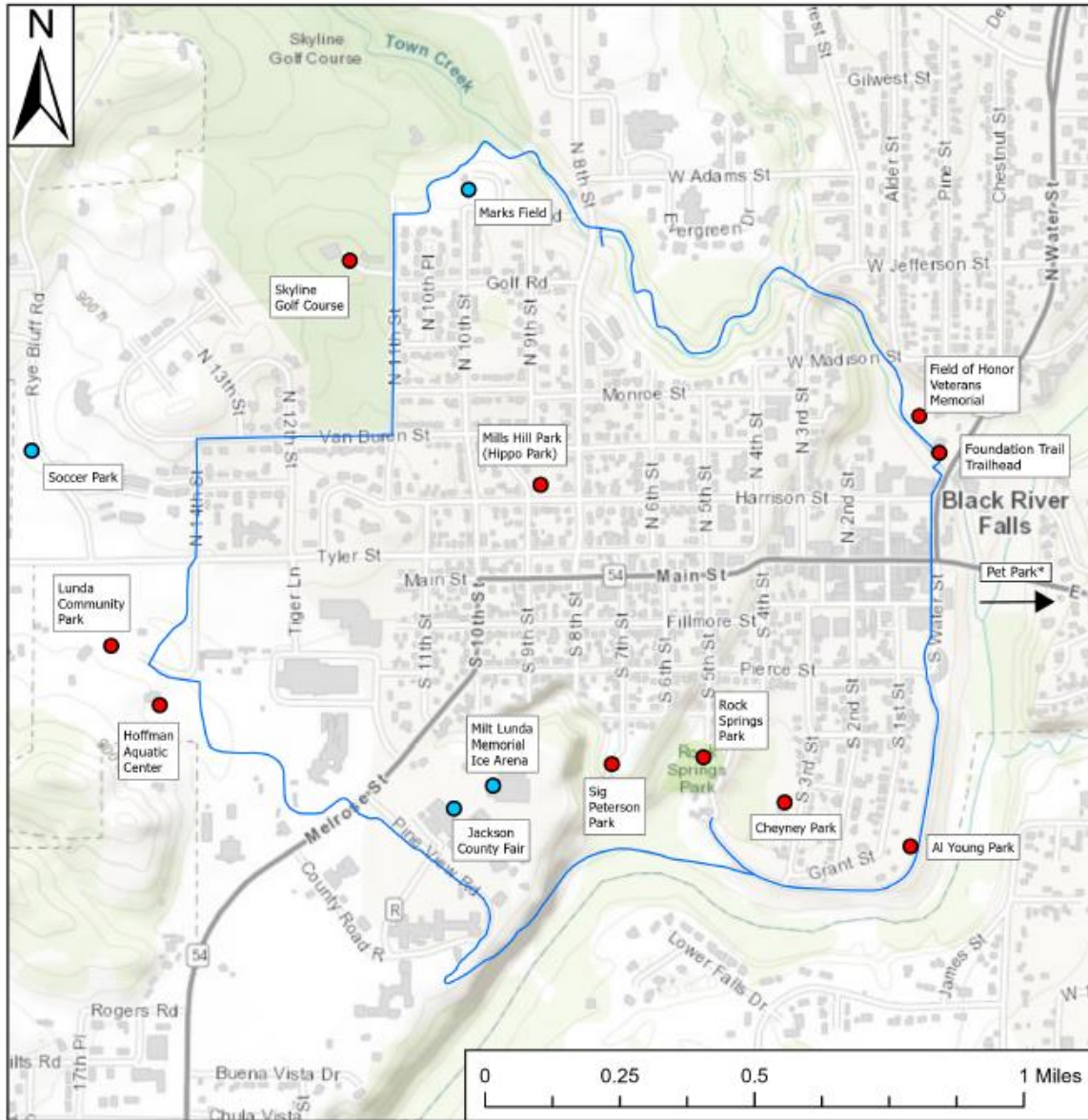
The Wisconsin League of Municipalities is adding [GrantFinder](#) as a new service for their members to identify eligible grants. This Grants database will identify state, federal, corporate and foundation grants available to local governments. This is a free service for League members.



# Appendix B: Maps

## Map 1. Black River Falls Parks

# Black River Falls Parks



Dot Canada, Inc. 2006, Garmin, INCREMENT P USGS, METROGIS, ERI, USDA



### Legend

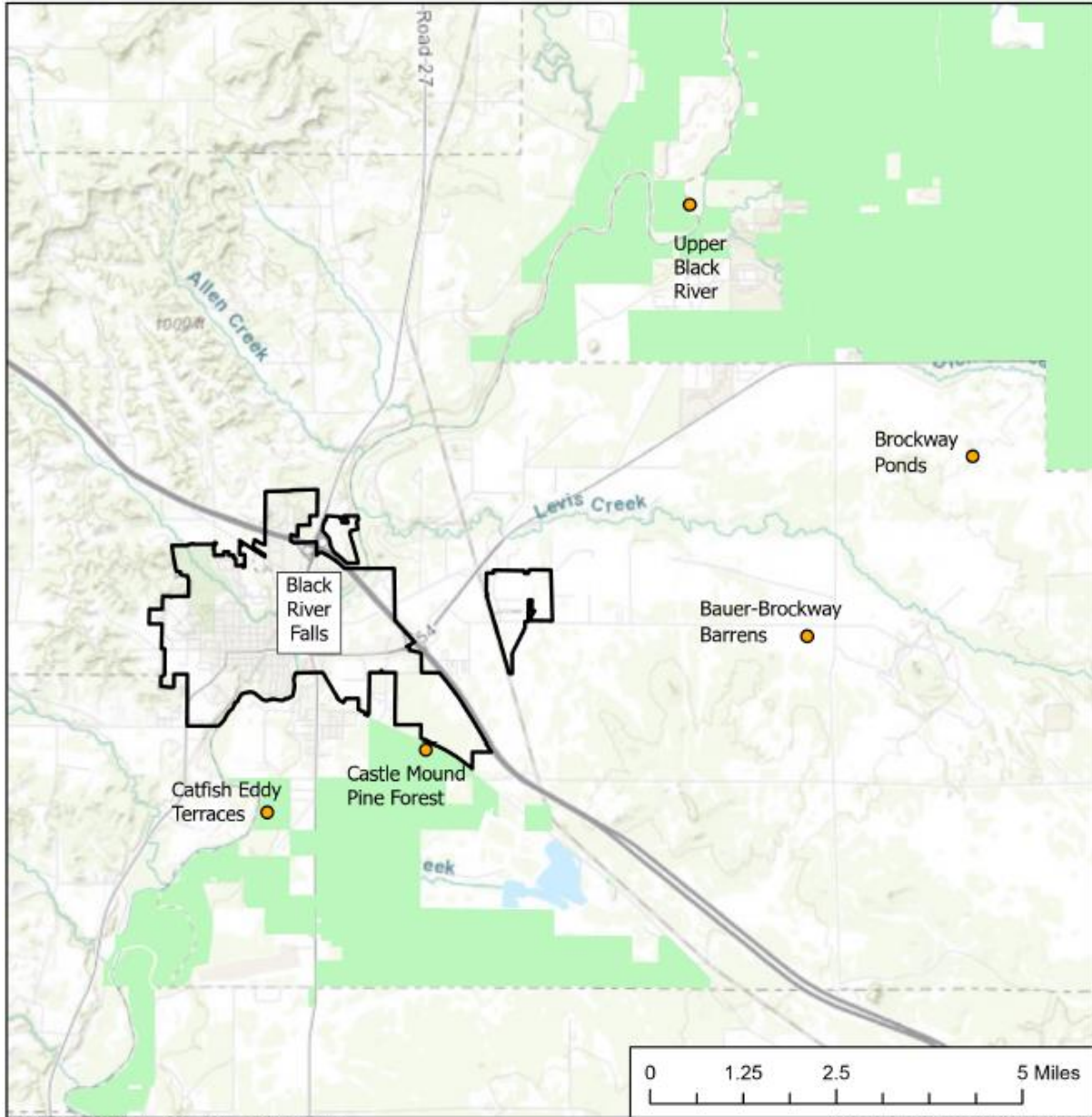
- City Park
- Other Recreational Facility
- Foundation Trail

\* Pet Park (not visible) is located about 2 miles to the east of Black River Falls, under a 5 minute drive from downtown.



## Map 2. State Forests And Natural Areas

# State Forests and Natural Areas



Legislative Technology Services Bureau, Wisconsin Department of Natural Resources

Esri, Canals, Esri, MRRPC, Garmin, ICGNS, NG4, EP4, USGS, NPS



### Legend

- State Natural Areas
- Black River State Forest
- Black River Falls

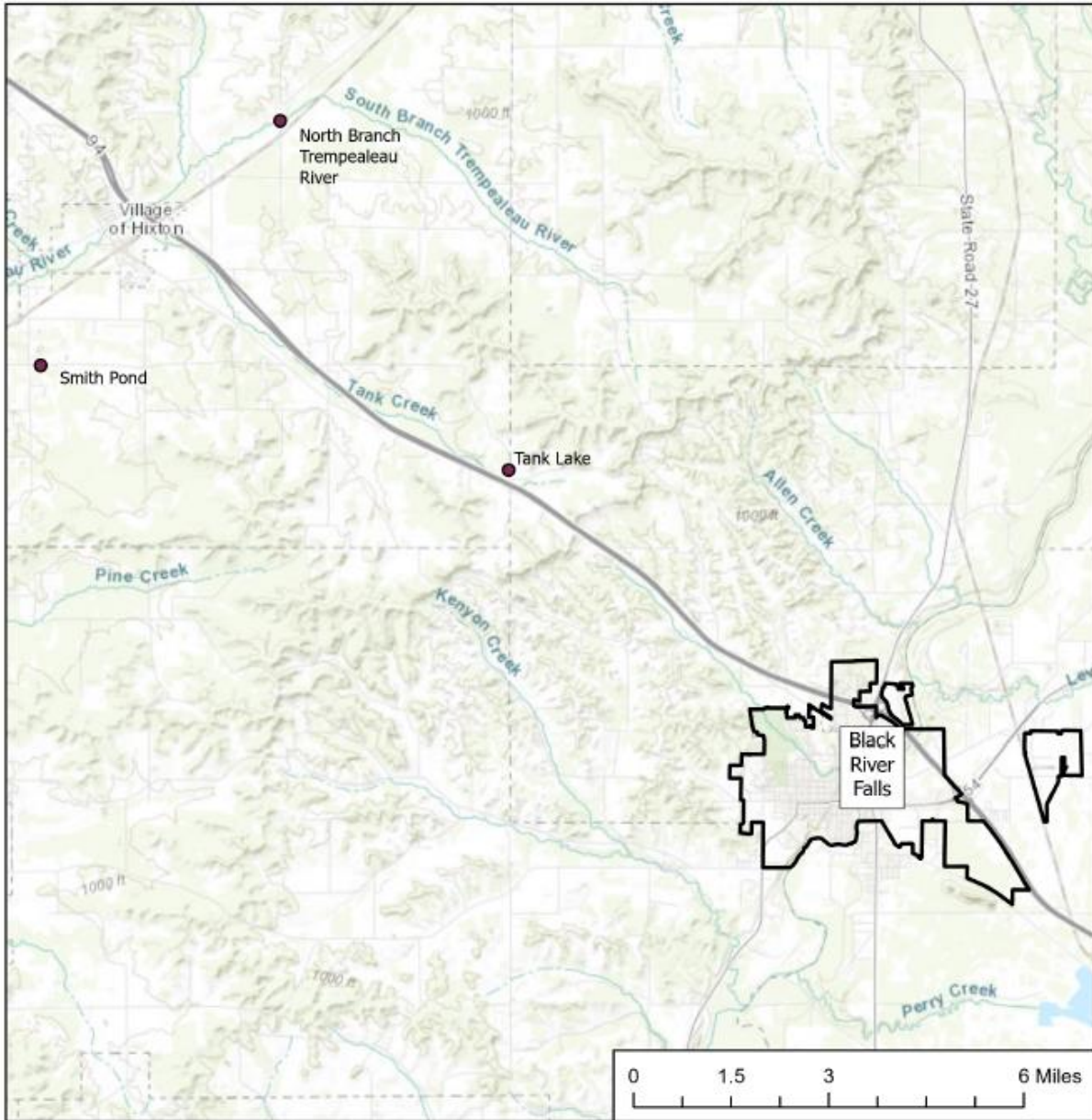






### Map 3. State Fishery Areas

# State Fishery Areas





Lightbox Technology Services Bureau

Esri, Caltek, Esri, MRRPC, Garmin, USGS, NGA, EPA, USDA, NPS



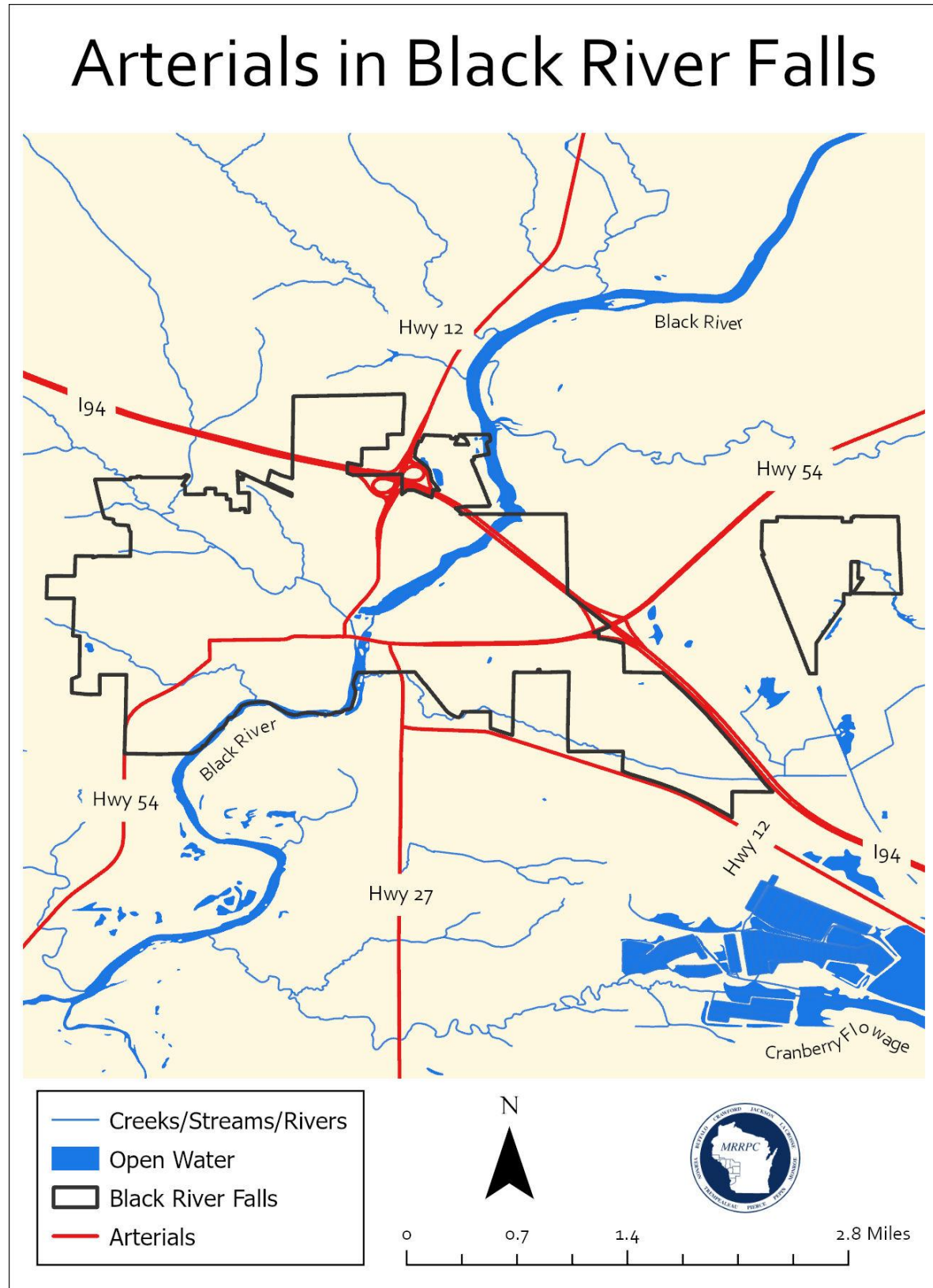
## Legend

-  Black River Falls
-  State Fishery Areas





### Map 4. Transportation Arterials

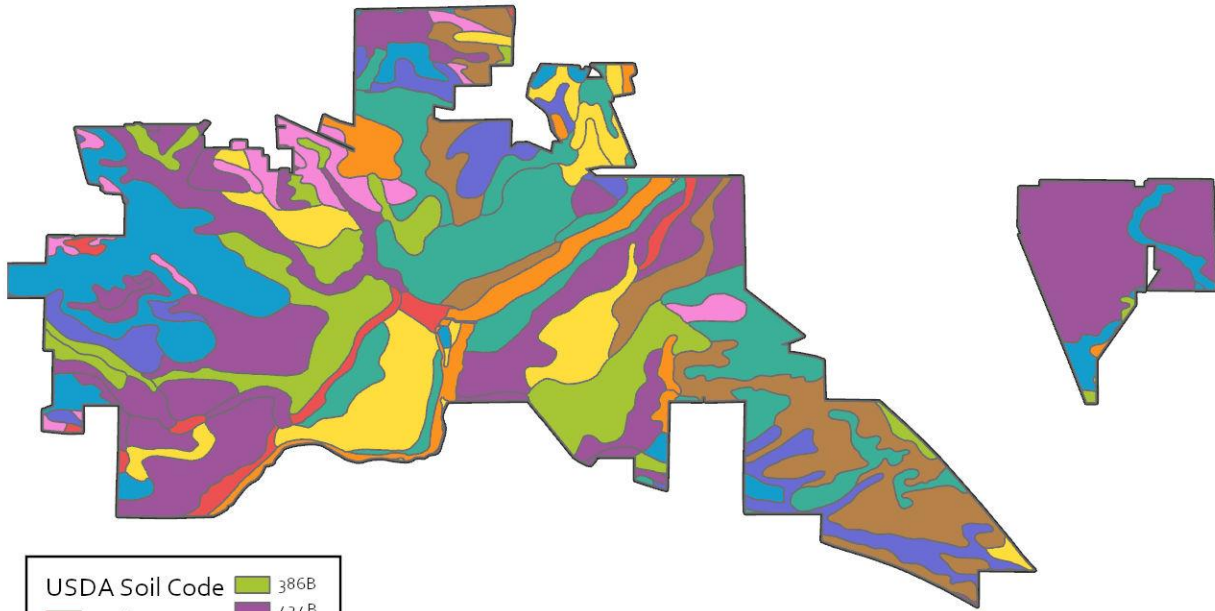




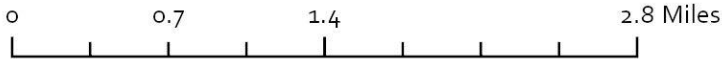


### Map 5. Soils in Black River Falls

# Soils in Black River Falls



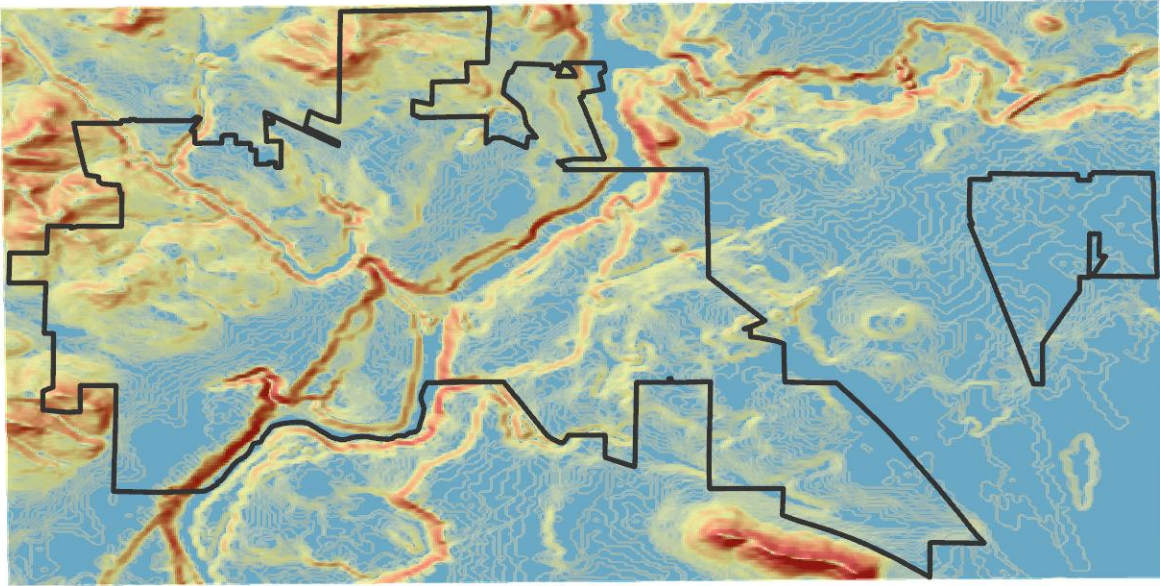
USDA Soil Code	
115vB	386B
115vC2	424B
1218A	434B
1254D2	446A
1519A	456A
1658A	501A
1715D2	511B
1740C2	511C
1740D2	511F
1743F	518A
213D2	551A
218A	561B
224B	561C
224C2	566A
233C	576B
25A	646A
286B	656A
288A	741B
296B	AbcA
299A	DAM
382B	NecA
383B	SecA
	W





## Map 6. Topography

# Topography of Black River Falls



 Black River Falls

### Slope

 High

 Low

N



0 0.7 1.4 2.8 Miles



## Appendix C: Tables

**Table 1. Population & Future Projections**

Municipality	Census 1990 <sup>(3)</sup>	Census 2000 <sup>(2)</sup>	Census 2010 <sup>(1)</sup>	Census 2020 <sup>(1)</sup>	Change (%) 1990 to 2020	Projection 2030 <sup>(4)</sup>	Projection 2040 <sup>(4)</sup>	Projected Change 2020 to 2040
Black River Falls	3,490	3,618	3,622	3,523	0.95%	3,725	3,565	1.2%
Jackson County	16,588	19,100	20,449	21,145	27.5%	23,200	23,290	10.1%
Wisconsin	4,891,769	5,363,715	5,363,675	5,893,718	20.5%	6,375,910	6,491,635	1.8%

Sources: 1) Decennial U.S. Census ([Table P1](#)) – U.S. Bureau of Census, 2) 2000 Decennial Census ([Table DP1](#)), 3) 1990 Census of Population, General Population Characteristics, Wisconsin ([govinfo.gov](#)) 4) [Wisconsin Department of Administration – Demographics Service Center](#)



**Table 2. Age Characteristics**

	Total	Percent
<b>Total Population</b>	3,488	(X)
<b>Age</b>		
Under 5 years	165	4.7
5 to 9 years	313	9.0
10 to 14 years	179	5.1
15 to 19 years	123	3.5
20 to 24 years	167	4.8
25 to 29 years	138	4.0
30 to 34 years	191	5.5
35 to 39 years	372	10.7
40 to 44 years	140	4.0
45 to 49 years	112	3.2
50 to 54 years	190	5.4
55 to 59 years	112	3.2
60 to 64 years	384	11.0
65 to 69 years	351	10.1
70 to 74 years	138	4.0
75 to 79 years	181	5.2
80 to 84 years	129	3.7
85 years and over	103	3.0
<b>Selected Age Categories</b>		
5 to 14 years	492	14.1
15 to 17 years	48	1.4
Under 18 years	705	20.2
18 to 24 years	242	6.9
15 to 44 years	1,131	32.4
16 years and over	2,831	81.2
18 years and over	2,783	79.8
21 years and over	2,705	77.6
60 years and over	1,286	36.9
62 years and over	1,064	30.5
65 years and over	902	25.9
75 years and over	413	11.8
<b>Summary Indicators</b>		
Median age (years)	43.2	(X)
Sex ratio (males per 100 females)	91.1	(X)

Source: 2022 ACS 5-Year Estimates, [S0101 Age and Sex](#)



**Table 3. Soil Types & Definitions**

Map Unit Symbol	Map Unit Name	Acres in Black River Falls	Percent of Black River Falls
561B	Tarr sand, 1 to 6 percent slopes	478.1	17.7
288A	Merrillan fine sandy loam, 0 to 3 percent slopes	223.5	8.3
115vC2	Seaton silt loam, driftless valley, 6 to 12 percent slopes, moderately eroded	221.2	8.2
551A	Impact sand, 0 to 3 percent slopes	204.4	7.6
296B	Ludington sand, 1 to 6 percent slopes	193.4	7.2
SecA	Sechler loam, cool, 0 to 3 percent slopes, frequently flooded	128.7	4.8
511B	Plainfield loamy sand, river valley, 1 to 6 percent slopes	113.7	4.2
1658A	Alganssee-Kalmarville complex, river valleys, 0 to 3 percent slopes, frequently flooded	112.6	4.2
299A	Elmlake muck, 0 to 1 percent slopes	106.7	3.9
656A	Scotah loamy fine sand, 0 to 3 percent slopes, occasionally flooded	97.3	3.6
424B	Merit silt loam, 1 to 6 percent slopes	86	3.2
W	Water	77.4	2.9
566A	Tint sand, 0 to 3 percent slopes	71.7	2.7
25A	Dawsil mucky peat, 0 to 1 percent slopes	58.9	2.2
741B	Sebbo loam, 1 to 6 percent slopes	50.5	1.9
1254D2	Norden-Seaton silt loams, 12 to 20 percent slopes, eroded	43.2	1.6
501A	Finchford loamy sand, 0 to 3 percent slopes	39.3	1.5
456A	Bilmod sandy loam, 0 to 3 percent slopes	38.8	1.4
511F	Plainfield sand, river valley, 15 to 60 percent slopes	37.1	1.4
434B	Bilson sandy loam, 1 to 6 percent slopes	29.1	1.1
224B	Elevasil sandy loam, 2 to 6 percent slopes	25.9	1
286B	Humbird fine sandy loam, 1 to 6 percent slopes	24.2	0.9
518A	Rockdam sand, 0 to 3 percent slopes	25.5	0.9
1715D2	Council and Seaton soils, 12 to 20 percent slopes, moderately eroded	24.8	0.9
1740C2	Council-Bilson fine sandy loams, 6 to 12 percent slopes, moderately eroded	25.2	0.9
NecA	Newlang muck, cool, 0 to 1 percent slopes, frequently flooded	18.2	0.7
218A	Ironrun sand, 0 to 3 percent slopes	16.5	0.6
646A	Dunnbot fine sandy loam, 0 to 3 percent slopes, occasionally flooded	17	0.6
224C2	Elevasil sandy loam, 6 to 12 percent slopes, moderately eroded	14.2	0.5
383B	Mahtomedi loamy sand, 0 to 6 percent slopes	12.2	0.5
AbcA	Absco loamy sand, cool, 0 to 3 percent slopes, occasionally flooded	13.1	0.5
386B	Jackson silt loam, 1 to 6 percent slopes	11.2	0.4
1218A	Ironrun-Ponycreek complex, 0 to 3 percent slopes	9.7	0.4
1743F	Council-Elevasil-Norden complex, 20 to 45 percent slopes, rocky	7	0.3
213D2	Hixton silt loam, 12 to 20 percent slopes, moderately eroded	5.3	0.2
233C	Boone sand, 6 to 15 percent slopes	4.5	0.2





## Black River Falls Outdoor Recreation Plan 2024 - 2029

446A	Merimod silt loam, 0 to 3 percent slopes	5.6	0.2
511C	Plainfield sand, river valley, 6 to 15 percent slopes	5.2	0.2
561C	Tarr sand, 6 to 15 percent slopes	6.5	0.2
576B	Tintson sand, 1 to 6 percent slopes	5.9	0.2
1740D2	Council-Bilson fine sandy loams, 12 to 20 percent slopes, moderately eroded	5.7	0.2
382B	Bertrand silt loam, 1 to 6 percent slopes	1.7	0.1
1519A	Ponycreek-Dawsil complex, 0 to 1 percent slopes	1.7	0.1
DAM	Dam, concrete	2.6	0.1
115vB	Seaton silt loam, driftless valley, 2 to 6 percent slopes	0.6	0.0
<b>Total</b>		<b>2,701.6</b>	<b>100.0</b>

Source: Soil Report, Land Capability Classification, Web Soil Survey



**Table 4. Employment**

	Total	Percent (%)
<b>Population 16 years &amp; over</b>	2,831	
In workforce	1,499	52.9
Employed	1,431	50.5
Unemployed	68	2.4
Armed Forces	0	-
<b>Occupation</b>		
Management & Business	358	25.0
Service Industry	367	25.6
Sales & Office	216	15.1
Natural Resources & Construction	170	11.9
Production & Transportation	320	22.4

Source: 2022 U.S. Census Data; ACS – 5 Year Estimates Data Profiles ([DP03](#))

**Table 5. Employment Age Characteristics**

	Total	Percent of Total (%)
<b>Age (Years)</b>	2,831	
16 to 19	123	4.3
20 to 24	167	5.9
25 to 29	138	4.9
30 to 34	191	6.7
<b>35 to 44</b>	512	18.1
45 to 54	302	57.7
55 to 59	112	4.0
60 to 64	384	13.6
65 to 74	489	17.3
75 and over	413	14.6

Source: 2022 U.S. Census Data; ACS 5 – Year Estimates Subject Tables ([S2301](#))



# Appendix D: Outdoor Recreation Survey and Results

## Black River Falls Outdoor Recreation Survey Results



## City of Black River Falls



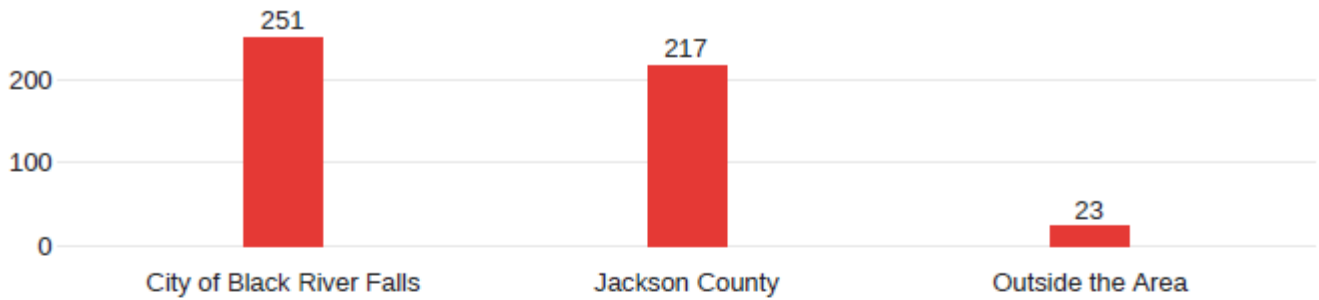
### OVERVIEW

Comprehensive Outdoor Recreation Plans are intended to evaluate outdoor recreation supply, demand, trends and issues. They are used to set forth ideas about recreation's future role in the community and serve as the roadmap for future recreational development.

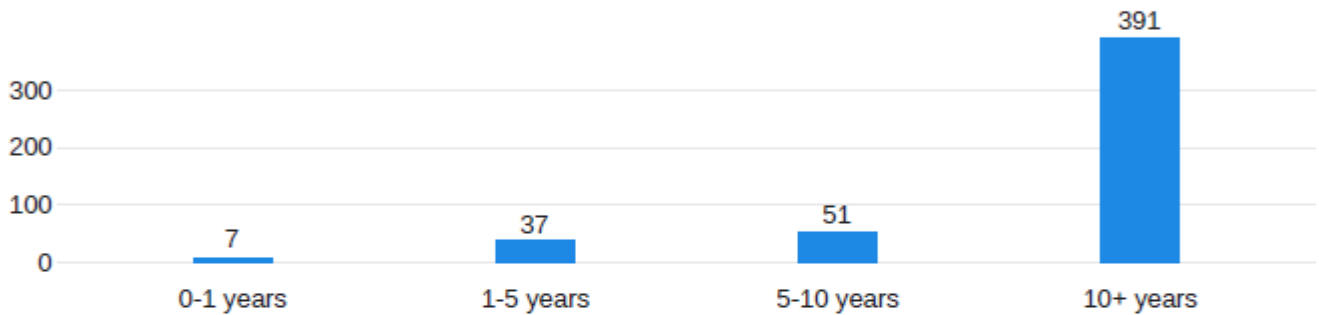
These Plans should reflect the interest on the part of the community at large in addition to the elected officials, staff and committee members. This survey is a reflection of that input in Black River Falls.



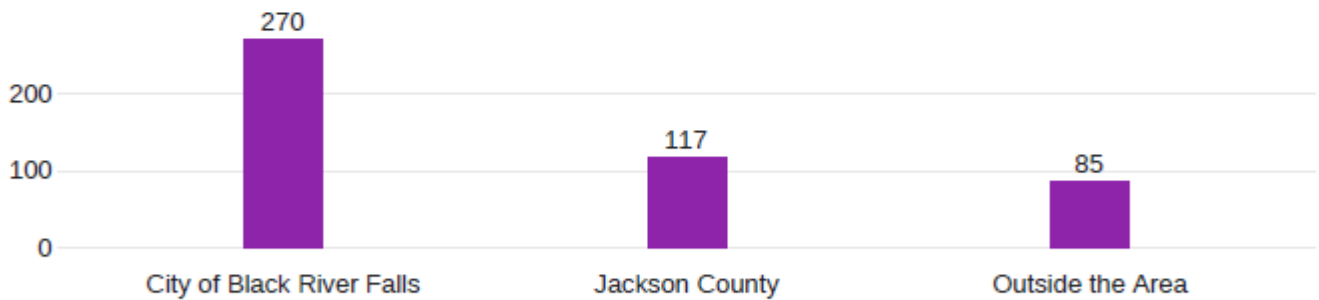
### I live In?



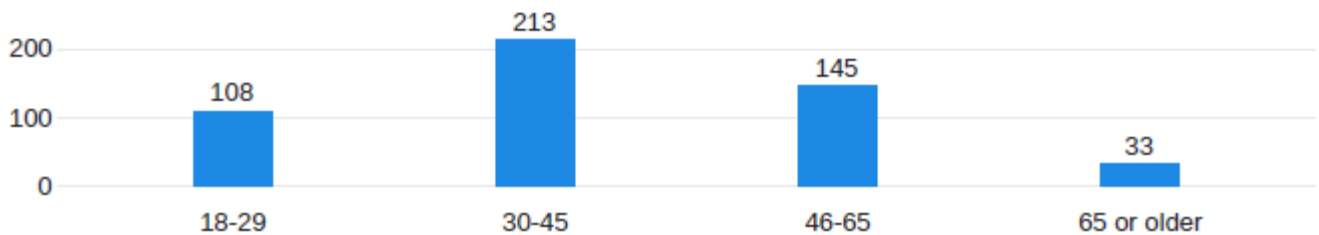
### If you live here, how long have you lived in the Black River Falls area?



### I Work In?

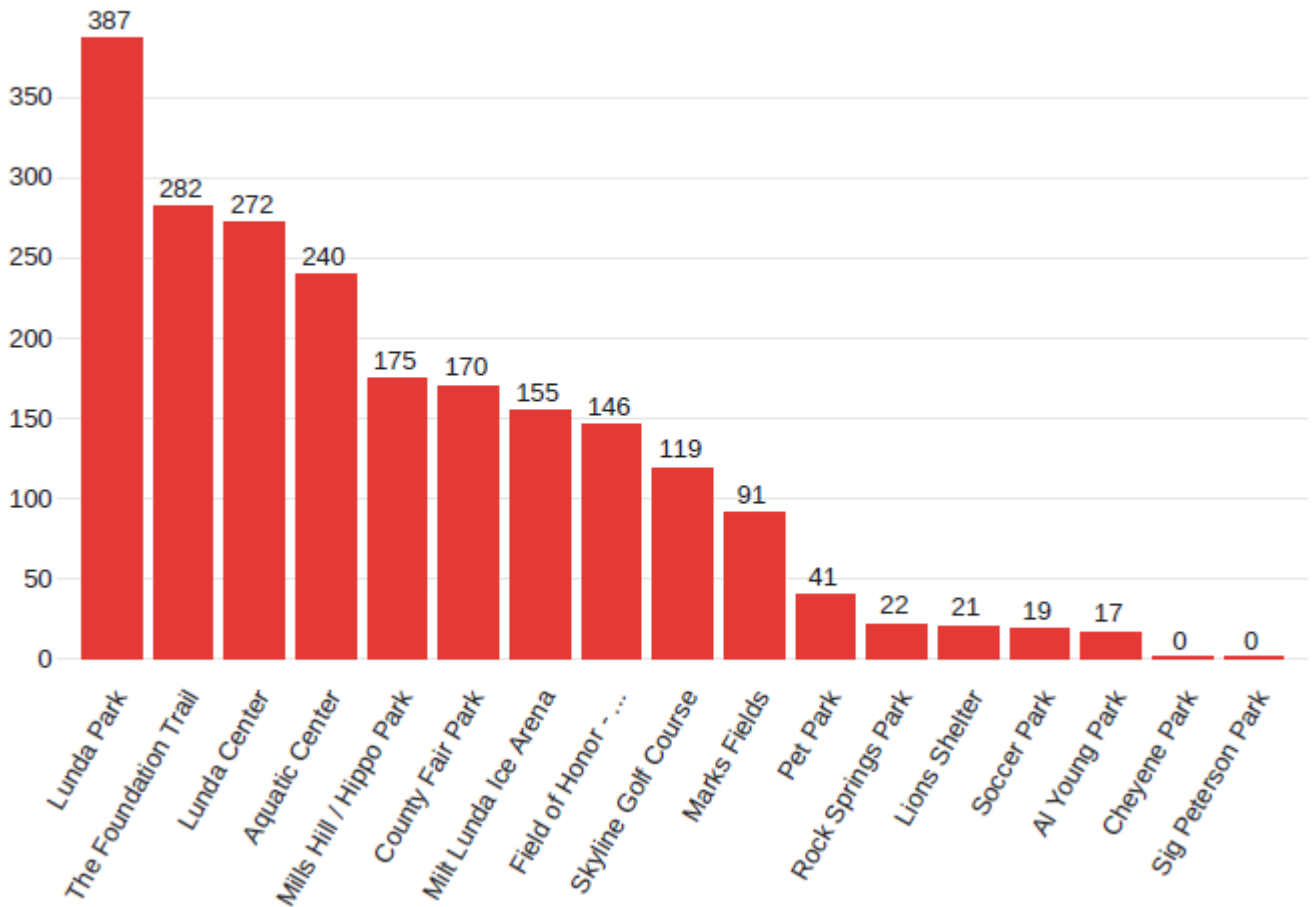


### Which best describes the age group you belong too?

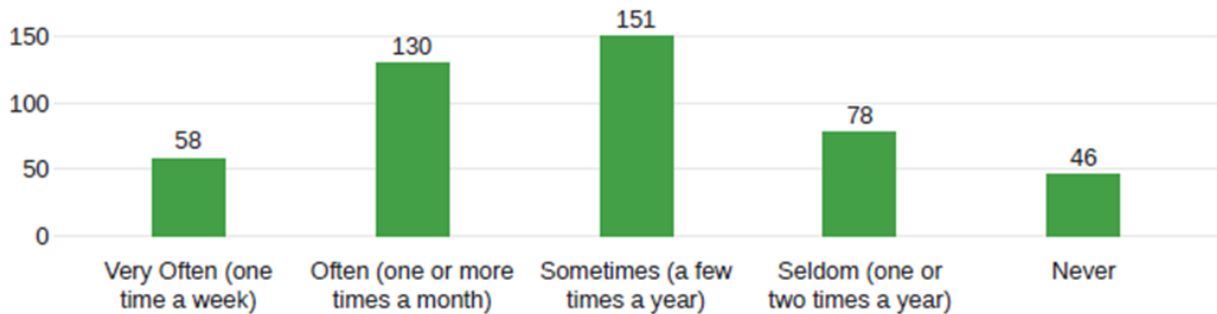




### My Favorite Parks are?



### How often do you use the Foundation Trail?





## Q5 - What are your favorite outdoor recreation activities?

Field	Mean	Responses
Playground Activities	77.64	275
Swimming	75.13	279
Other:	73.38	32
Hiking	71.96	291
Fishing	66.44	247
City Organized Sports Activities: Little League, Adult Softball	66.32	192
Camping	66.08	279
Boating	64.56	249
UTV/ATV Riding	63.67	166
Canoeing / Kayaking / SUP board	63.67	250





Field	Mean	Responses
Wildlife Viewing / Bird Watching	63.58	197
Picnicking	62.33	211
Other Organized Sports Activities	59.25	161
Biking Trails Paved / Gravel	55.16	201
Snowmobiling	52.39	109
Running	50.82	127
Cross Country Skiing / Snowshoeing	50.14	112
Basketball	42.55	124
Mountain Biking / Bike Parks	39.39	125
Pickleball	39.04	99
Tennis	37.05	109

Other activities mentioned...





## The Black River Falls Parks & Recreation Department offers Little League and other programs...

Field	Mean	Responses
Other Adult Programing	2.93	339
Adult Softball	2.88	338
Other Outdoor Events	2.77	351
Other Youth Programing	2.73	350
Little League	2.54	365
Festival in the Park	2.37	369
Summer Music in The Park	2.25	370

I would like to see the following additional or new organized sport, program or special event in Black River Falls.

I would like to see the following additional or new organized sport, program or special event in Black River Falls.

Disc Golf,something to do with pets

Our community is a beautiful place to live and it's nice to be able to showcase that.

I wish our parks and rec department was more in tune with what could be used more in our community. Each sport has their own organization, but it would be nice to have it more of a community feel and not each separate sport. I really hope they can get their act together and get the Hoffman Aquatic Center ready for this upcoming summer season. You cannot expect to NOT put money into something for many years and expect it to continue to work. Talk to the high school and see if you could get some of those students to volunteer to paint and or clean up the flower gardens. We should be proud of that facility...not let it wither away!

Addition of another sheet of ice for youth hockey and figure skating

Atv trail opening and trail closing annual events? poker run music raise money to help with the trails ect

It's unfortunate that our community struggles with festivals and special events. I'm not sure if it's lack of planning participants or poor planning. Maybe a bit of both. Our events are not consistent. Here one year gone the next. I wish we could form a committee that has experience in event planning and how to be successful. Events that draw all ages and gets the community excited. Besides events, we seriously lack places for families to gather. We have NOTHING for families to do in town besides exercise. The one place for families to go swimming outdoors closes for the summer because no one chose to properly maintain our ONE outdoor pool?? Someone should be held responsible for that and have to pay the money lost in memberships to help with repairs. And people wonder why we go out of town to spend our money. So disheartened our community offers very little while surrounding cities are thriving and growing.



I would like to see a program that offers gymnastics for the families that have kids that want to do it but live on a fixed income and can't afford all that is required to be in a program that you have to drive 20 miles or more just to train. I see all the other programs and events for everything else and are great don't get me wrong but I honestly think a program for gymnastics would be a plus even if is a trail base at first just to see who would sign up or even come.

More things for older adults

More flea market at the fair grounds ' craft fair s, regional cook offs higher end awards

add in a splash pond/splash park over by lundas new playground

I would like to see another ice arena, preferably a year round sheet of ice. Our community would benefit from the year round traffic that would bring. Not to mention our own community members that would benefit from using the ice here year round rather than driving to Eau Claire or elsewhere.

I would really like to see the outdoor aquatic park get fixed and be open this summer (2024). I feel that the Black River Falls Community is a tight knit community and if money is the issue, everyone will pitch in for a fundraiser or whatever we need to do to get that park running again.

BRF CITY GOLF TOURNAMENT

Better pools, bike park

More ADA accessibility for events and areas that exist.

Foundation trail could be fixed up, kinda rough in spots on the trail

A new outdoor water park

More festival's-similar to Cranfest(if Warrens can manage why can't we; better concerts-like well known bands, better planned October fest-downtown like it used to be to include the businesses there; more community involvement in planning these events.

Bike trails

Splash pad

Revamp Festival in the Park to be more of a 4th of July celebration



From the list below, please address needs for public recreation facilities...

Field	We Have Adequate Facilities	No Interest To Me	We Need New / Additional Facilities
Water Park / Splash Pad	65	41	250
Swimming Pool	104	40	208
Boat / Kayak Rentals	76	105	162
Dog Park or Off Leash Trails	61	124	160
Fishing Pier	61	127	157
River Access	136	73	138
Paved Walking and Biking Paths / Trails	190	41	116
ADA / Handicap Facilities	89	136	113
Covered Group Picnic Shelters	178	62	110
Bird Watching / Wildlife Observation Sites	85	156	104
Unpaved Walking and Biking Paths / Trails	145	106	93
Disc Golf Courses	61	196	82
Sledding Hill	192	72	81
Open Play Turf Areas	113	140	81
Sand Volleyball Courts	76	185	78
Climbing Wall	103	168	75
Ice Rink	167	107	73
Playgrounds	230	46	73
Bicycle Park	88	189	73
Winter Trails	103	167	71
Cross Country Skiing or Snowshoe Trails	77	205	52
Baseball / Softball Fields	165	134	52
Soccer Fields	118	175	46
Pickleball Courts	86	214	44
Park Basketball Courts	127	178	41
Skate Park	116	199	34
Tennis Courts	104	215	24
Other, describe:	3	33	20



## Other public recreation facilities needed are...

Other, describe: - Text

utv play area

We need a walking/bike trail that goes over the interstate.

Warmer pool for kids and a hot tub for adults

Places to take the dog without a leash to run other than the dog park

Keeping the outdoor ice rink at Mills Hill Park and building some type of bathroom and shelter would be beneficial. As someone who lives near it, I can say that park is used a lot

We would like to see another Ice Rink

Longer season for utv riding

All abilities swings

Indoor ice skating rink

Safer Walking trails for older/handicap people

Repairs to the foundation trail

A summer pool for kids would be nice again

More outdoor water and other activities for kids

NEW Figure Skating Rink SEPARATE from Hockey!

The Hoffman pool needs to be warmer. The soccer fields would be adequate if maintained and had improved drainage.

Driving range for golf course

We need another sheet of ice to skate on

The soccer field needs a makeover. It isn't accessible for half of the season and the rest of the time is very poorly kept. I wish our hiking trails were better marked and mapped.

Splash pad would be perfect for kids!!!

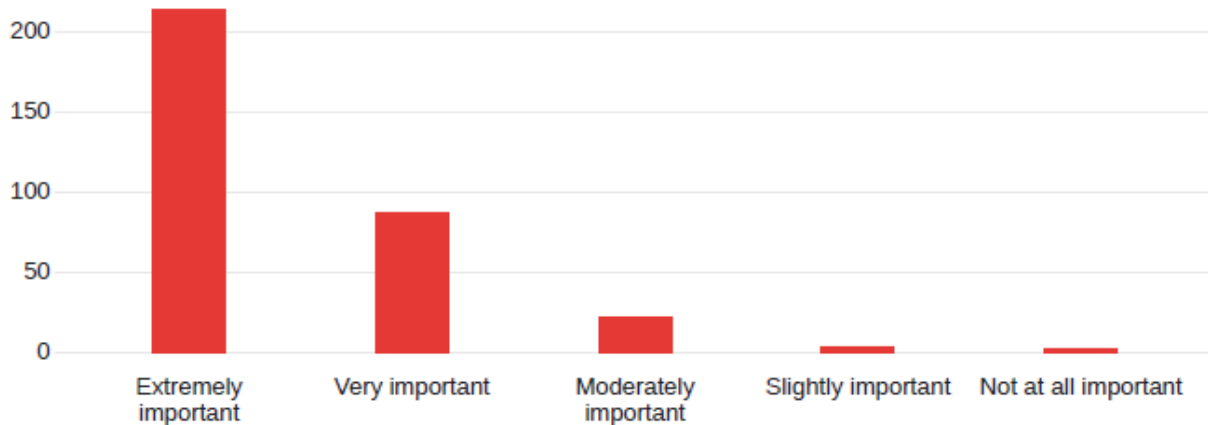
A full driving range or short chip and putt golf course



### Most important park improvements needed in Black River Falls.

Field	Mean	Responses
Upgrading existing parks, recreation facilities, trails and open spaces	75.48	269
Concentrating on maintaining existing parks and facilities only	67.58	244
Acquiring and protecting land for natural open space	64.95	202
Expanding and developing the trail system for pedestrian and bike use	64.04	197
Developing more dog off-leash parks or trails	59.64	204
Improving access and parking for existing trails and park facilities	56.62	196
Acquiring more land for future parks	51.62	175
Developing new sport courts like pickleball, tennis, basketball	43.18	152
Developing more sport fields like baseball, soccer, football	42.24	152

Do you think outdoor recreation opportunities are important to improve the quality of life for your family and Black River Falls residents?







I have traveled away from Black River Falls to specifically pursue outdoor recreational activities.



If Yes, please let us know where you went and what activity you were pursuing.

Yes, please let us know where you went and what activity you were pursuing. - Text

Trane Park in La Crosse

Biking

alpine skiing

Tomah, Ice hockey

utv trail riding in black hills

Miniature golf, boat rentals, snow tubing, outdoor/drive up movie theatre

hiking

Fishing Pentwell Lake

Swimming, Dog Parks, and hiking/biking trails

Madison bike trails, Sparta

Justin Trails Resort Disc Golf

Camel Back

walking track, playgrounds for toddlers, hoffman pool area, lunda parks

Bike and hiking trails

Hiking in other areas within an 1-2 hr drive of BRF

State and national parks around the country

Blair, swimming

More often than monthly for accessible activities. From dog parks ( multiple within an hour's drive, to parks, festivals etc that are accessible

Volleyball

Northern and East WI. Minnesota



## Your BIG Idea! If you could create the ideal outdoor recreation experience in Black River Falls, what would it be?

Your BIG Idea!

If you could create the ideal outdoor recreation experience in Black River Falls, what would it be?

Like I mentioned before, we need to invest in updating the Hoffman Aquatic Center. This was donated to our community but we have not help up our end of the bargain on keeping it updated. It just needs a little TLC!

more trails especially along water

More youth ice facilities for the growing sports of ice hockey & figure skating

get a atv utv race hear I have reached out to red bull

feel free to give me a call

James

Bear Bogging Adventure Tours

A drive up/outdoor movie theatre

A Miniature Golf course

Mine would be a obstacle course maybe maze to go through as well as a family treasure hunt/ mystery game something like clue or I that nature. Have the place to put the stuff needed for treasure hunt/ game like the clues or a site to be able to login to and download/ print before tje family goes out to do that activity.

I dont have big ideas but we really need a decent dog park that we are not afraid to go to. The swimming pool needs to be fixed so the kids have something to do in the summer. The more kids are out in nature and keeping busy the less time they have to get in trouble. Plus when the younger kids have the pool and parks to play at it teaches them good habits about getting exercise and staying healthy while being outside. Everyone wins with good outdoor spaces.

Brand new Cinemas

I think having more bike and walking trails would be a great way for people to exercise and become more fit. Safety is always a top concern. I, personally, don't feel safe walking on the trail alone and I hear that from many people.

upgrade marks field

upgrade continued parks to be toddler safe not just adults kids

Nice pool area possibly with a lazy river, slides, obstacle courses for kids and adults on the water, water games, kiddie pool for the little little ones, and maybe an outdoor game room with a pool table, air hockey game, darts.

We have many facilities, making sure that they all are maintained and kept up to date, is very important.

Something to get kids off their phones, and something that kids and adults can do together. Family fun.



Your BIG Idea!

If you could create the ideal outdoor recreation experience in Black River Falls, what would it be?

Expand the swimming pool to allow lap and open swim at the same time. Also a walking river for water walking w/o lifeguards.

Another hockey rink!

We have a nice variety of excellent activities and locations . Keeping them all up and available( Outdoor pool especially) brings a lot of visitors to our area.

- 1) Lake Wazee is a great example - having some biking trails out there would be nice.
- 2) Lunda Park is nice and has it all, although it could use a set of lighted tennis & pickleball courts (or improve the ones at the high school with surfacing and better lighting). Hoffman Aquatic Center is awesome, assuming it will get repaired.
- 3) I would enjoy walking places more but BRF is missing sidewalks in some areas and others are in disrepair. PLEASE consider going along Tyler Street towards Spaulding Rd - it would make for a MUCH better walk to Lunda Park
- 4) Boating on the Black River (without having to wait over 30 minutes to get the boat in or out of the water).
- 5) I would enjoy walking places more but BRF is missing sidewalks in some areas and others are in disrepair. PLEASE consider going along Tyler Street towards Spaulding Rd - it would make for a MUCH better walk to Lunda Park
- 6) I always loved taking my dogs out on some of the area wooded trails (or Skyline off season)... I just don't have any dogs currently. Having areas designated would be nice.

I am happy with what we have. The pool needs to be fixed though. The adult softball league needs better management.

Fix the current water park and get that running.

Use what we have and improve

I would like to have additional trails like the Foundation Trail. It gets so much use and is wonderful anytime of year. It might be nice to add a small area along the trail where you could have a picnic. I would add an additional pen at the dog park for small dogs (inside the existing park would work).



Your BIG Idea! If you could create the ideal outdoor recreation experience in Black River Falls, what would it be?





## Appendix E: Adoption Resolution

During the City of Black River Falls' Common Council Meeting on April 16, 2024, the below Resolution was passed approving the City of Black River Falls' Outdoor Recreation Plan.

***From the Meeting Minutes:***

It was moved by Alderperson Olson, seconded by Alderperson Gearing-Lancaster to approve

RESOLUTION 2024-04 – adopting the 2024-2029 Outdoor Recreation Plan. Motion carried.