

Map 7.01 Crawford County Locations of Environmentally Contaminated Sites

This map contains sites in Crawford County where a clean up of the contaminated is currently in progress (Open Site) and/or sites of where a clean up of a contaminated area has already been completed (Closed Site). This map does not contain spills, sites not mapped, or sites where action from the DNR is not required including sites that weren't reported to the DNR.

Legend

Contaminated Sites

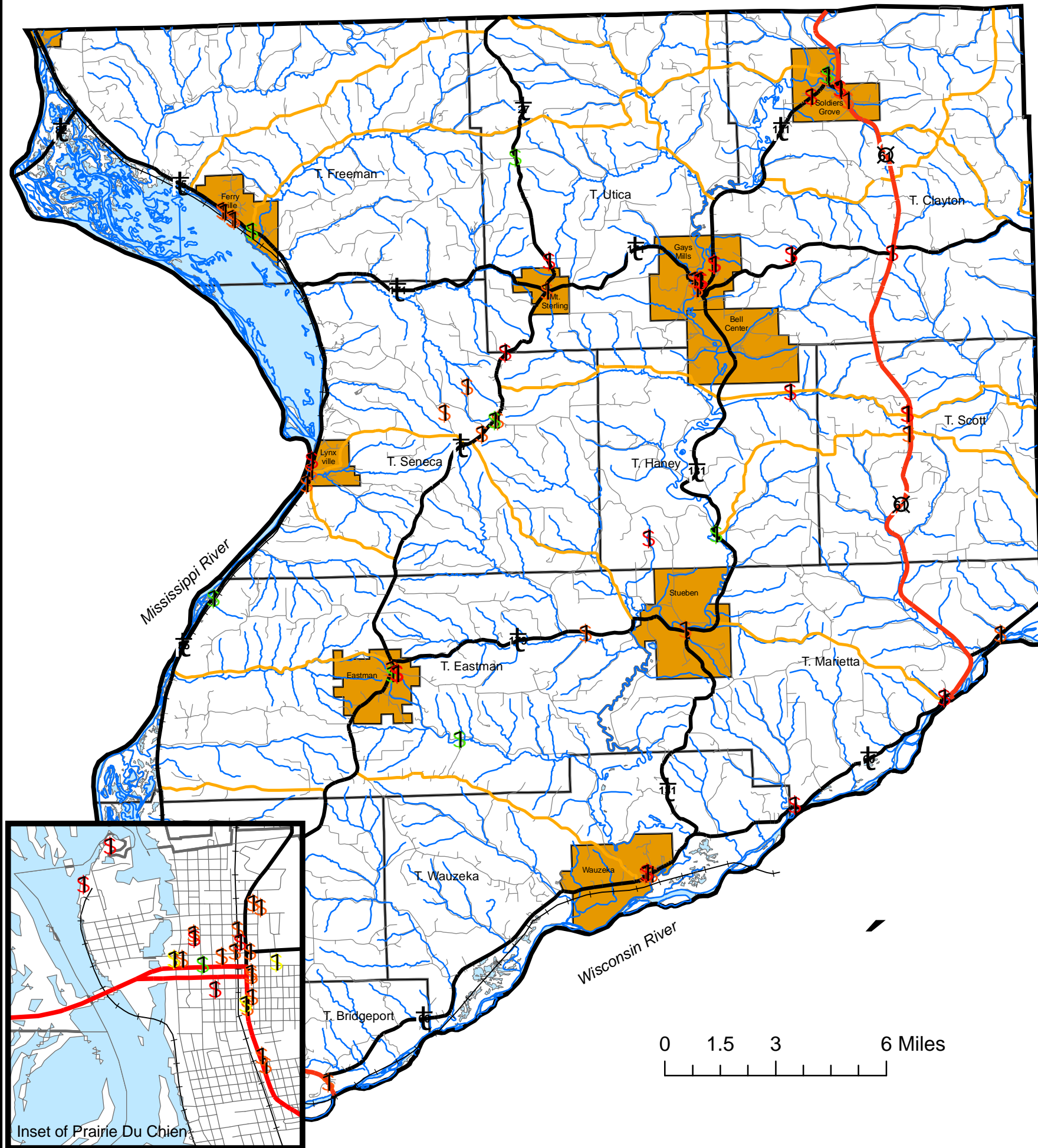
- \$ ERP Closed Site
- \$ ERP Open Site
- \$ LUST Closed Site
- \$ LUST Open Site

Roads

- U.S. Highway
- State Highway
- County Road
- Local Roads
- +— Railroads

Municipalities

- City/Village Limit
- Local Gov't Unit Boundaries



Map prepared by Jake Stansfield, University of Wisconsin - La Crosse Geography Intern for the Mississippi River Regional Planning Commission