

# Map 2.02 Crawford County FEMA Floodplain Areas

## Legend

### Municipalities

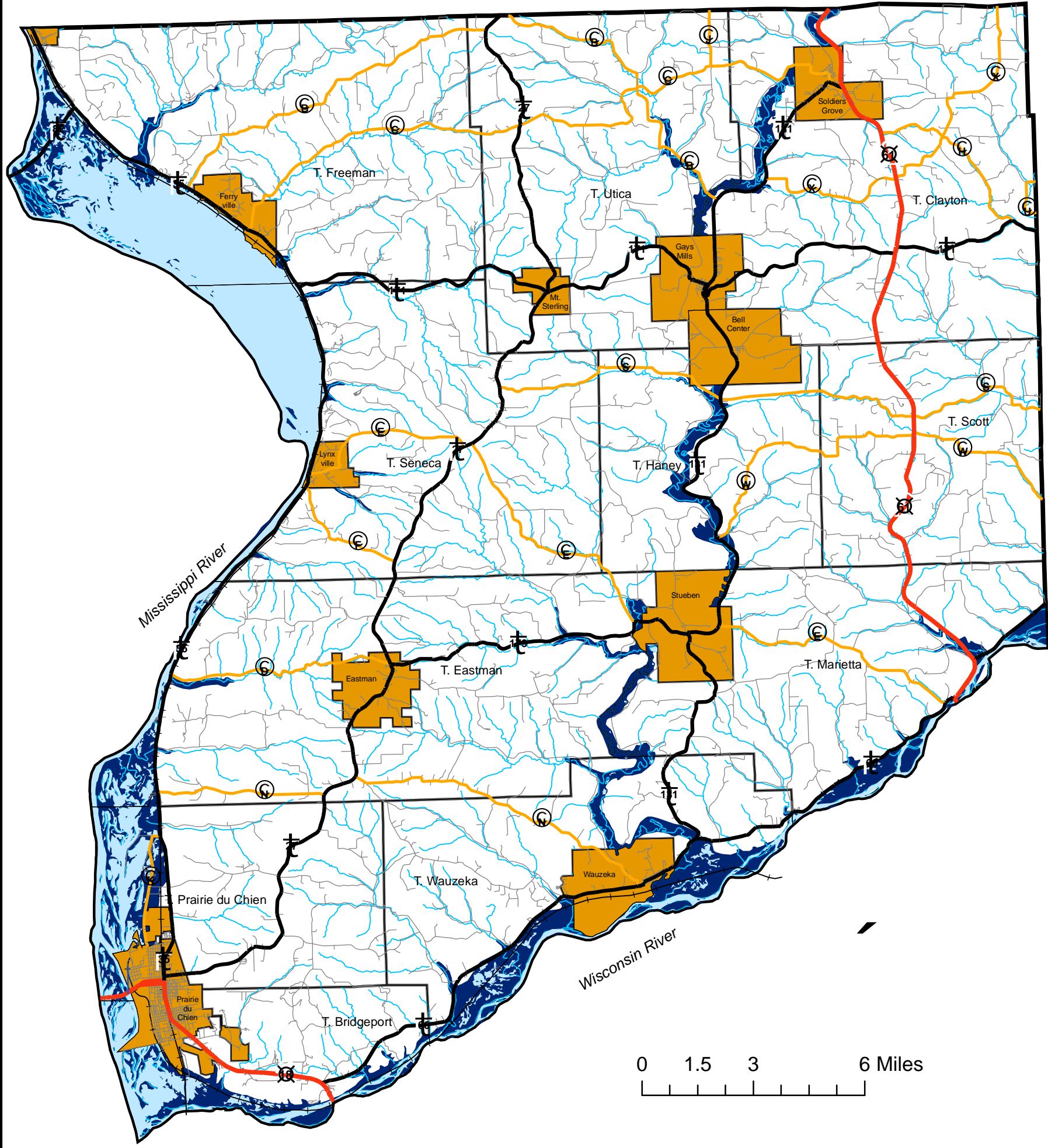
- City/Village
- Local Gov't Unit Boundaries

### Water

- Open Water
- Rivers and Streams
- Fema Flood Prone Areas\_region

### Roads

- U.S. Highways
- State Highways
- County Roads
- Local Roads
- Railroads



Map prepared by Jake Stansfield, University of Wisconsin - La Crosse Geography Intern for the Mississippi River Regional Planning Commission