

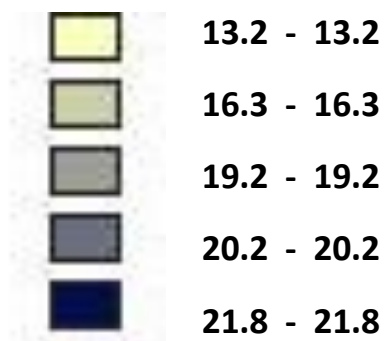
Buffalo County Strategies, Activities and/or Projects Work Plan

Priority of Goal	Strategy/Goal to support 5 year coordinated plan	Activities	Person(s) Responsible	Timeline/ Deadline	Roadblocks to Implementation
3	Increase transportation options for the transportation disadvantaged.	<ul style="list-style-type: none"> ■ Continue working with neighboring counties and agencies on the coordination of elderly disabled transportation services ■ Focus on coordinated transportation services to get people to work (employment buses, carpooling, etc.) ■ Explore shopping routes in the Northern portion of the county 	<ul style="list-style-type: none"> ■ Buffalo County Department on Aging 	Ongoing through 5 year plan period	<ul style="list-style-type: none"> ■ Need Volunteers ■ Shift workers –Need a ride home ■ Employer buying into program ■ Criteria for ridership ■ Funding ■ Funding rules /requirements
2	Develop/expand/continue transportation services.	<ul style="list-style-type: none"> ■ Work to improve and expand transportation services/programs ■ Maintain and increase volunteer drivers ■ Maintain/upgrade vehicle fleet 	<ul style="list-style-type: none"> ■ Buffalo County Department on Aging ■ County Administration 	Ongoing through 5 year plan period	<ul style="list-style-type: none"> ■ Funding ■ Communication ■ Rural Area
4	Develop and improve access to information and increase awareness of transportation services (marketing/educational outreach).	<ul style="list-style-type: none"> ■ Update county website with current information on program ■ Explore implementation of newsletter to consumers ■ Expand Public outreach and marketing to rural areas 	<ul style="list-style-type: none"> ■ County Administration ■ Buffalo County Department on Aging 	Ongoing through 5 year plan period	<ul style="list-style-type: none"> ■ Limited Resources (staff, time, etc) ■ Coordination of Resources Funding
5	Maximize the efficiency of transportation services through technology, innovation and coordination.	<ul style="list-style-type: none"> ■ Participate in regional activities and coordination of efforts ■ Explore shared marketing approaches to reaching consumers ■ Explore technology grants availability 	<ul style="list-style-type: none"> ■ Adjacent counties ■ Buffalo County Department on Aging ■ ADRC 	Ongoing through 5 year plan period	<ul style="list-style-type: none"> ■ Internet Access ■ Limited Resources (staff, time, funding, etc.)
1	Strive to increase transportation funding to create sustainable transportation services.	<ul style="list-style-type: none"> ■ Apply for grant funding when available (85.21, 5310, etc) ■ Strive to maintain and increase local funding (grants, county contributions) ■ Continue application for WDVA Transportation Grant for Veterans 	<ul style="list-style-type: none"> ■ Buffalo County Department on Aging 	Ongoing through 5 year plan period	<ul style="list-style-type: none"> ■ Availability of Grants ■ Limited Resources (staff, time, funding, etc.)

Buffalo County Needs and Gaps

- No weekend service
- No off hours service
- Availability of cot and stretcher transportation
- Availability of dialysis and bariatric transportation
- Availability of vehicles capable of transporting wheelchairs
- Educating the public and medical community to schedule appointments to coincide with transit timetables
- Lack of transit between Wisconsin and Minnesota communities
- Unexpressed or hidden demand for transit in rural areas (i.e., people need transit, but aren't speaking up about it)
- Keeping fares affordable
- Programs for purchase and/or repair of private automobiles
- Disabled population transportation
- Transportation for employment
- Improve marketing, outreach, and education about transportation options

Buffalo County 65+ Year of Age Percent of Population Distribution by Census Tract as of 2010 Census



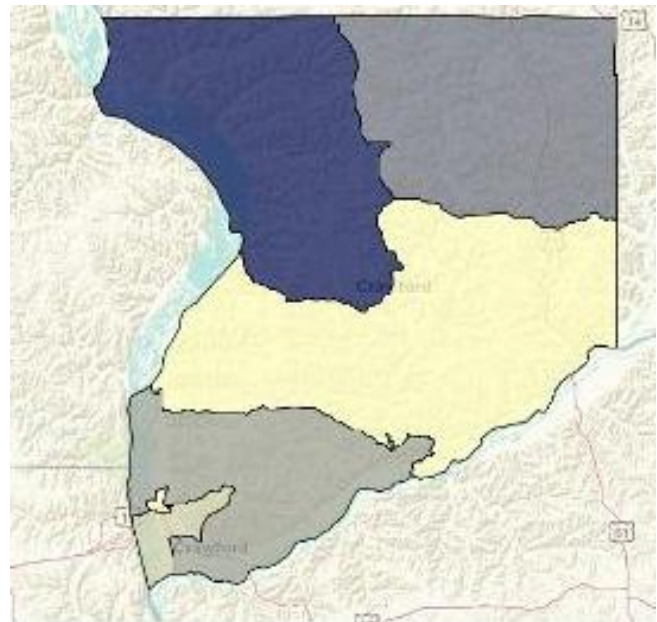
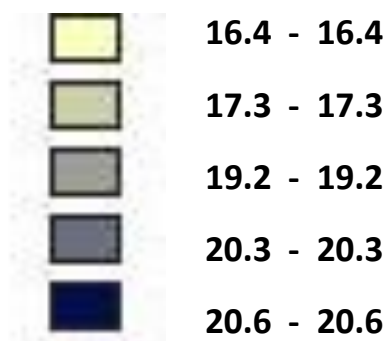
Crawford County Strategies, Activities and/or Projects Work Plan

Priority of Goal	Strategy/Goal to support 5 year coordinated plan	Activities	Person(s) Responsible	Timeline/ Deadline	Roadblocks to Implementation
3	Increase transportation options for the transportation disadvantaged.	<ul style="list-style-type: none"> ■ Coordinate ADRC routes to compliment SMRT routes ■ Advocate/focus on increasing disabled ridership ■ Collaborate with other agencies for transportation sharing ■ Explore volunteer driver program ■ Evaluate modify routes based on ridership of ADRC/SMRT Bus routes 	<ul style="list-style-type: none"> ■ County TCC and ADRC of Eagle Country- Prairie du Chien Office 	<ul style="list-style-type: none"> ■ Ongoing through 5 year plan period 	<ul style="list-style-type: none"> ■ Funding ■ Hiring additional drivers ■ Volunteer drivers ■ Employer buy in to transportation shift changes
1	Develop/expand/continue transportation services.	<ul style="list-style-type: none"> ■ Continue TCC meetings/members ■ Expansion of non-medical trips ■ Obtain funding for replacement bus(s) ■ Develop routes to connect with SMRT Bus ■ Use mobility manager for marketing and expansion of services. 	<ul style="list-style-type: none"> ■ County TCC and ADRC of Eagle Country- Prairie du Chien Office 	<ul style="list-style-type: none"> ■ Ongoing through 5 year plan period 	<ul style="list-style-type: none"> ■ Funding ■ SMRT Bus schedule changes ■ Grant award for mobility manager
5	Develop and improve access to information and increase awareness of transportation services (marketing/educational outreach).	<ul style="list-style-type: none"> ■ Explore mobility manager position for outreach ■ Website links among transportation providers ■ TV Mediacom advertisements ■ Local radio/newspaper – bus schedule ads ■ Outreach to businesses, senior housing, meal sites, clinics ■ Explore shared marketing with other counties/agencies 	<ul style="list-style-type: none"> ■ County TCC and ADRC of Eagle Country- Prairie du Chien Office 	<ul style="list-style-type: none"> ■ Ongoing through 5 year plan period 	<ul style="list-style-type: none"> ■ Grant funding for mobility manager ■ Computer literacy for elderly and disabled ■ Cost of advertisement ■ Distribution to target audience
2	Maximize the efficiency of transportation services through technology, innovation and coordination.	<ul style="list-style-type: none"> ■ Explore online ride scheduling ■ Sharing website links among SMRT Bus, neighboring ADRC's, and transportation providers ■ Volunteer "bus buddies" to accompany elderly/disabled 	<ul style="list-style-type: none"> ■ County TCC and ADRC of Eagle Country- Prairie du Chien Office 	<ul style="list-style-type: none"> ■ Ongoing through 5 year plan period 	<ul style="list-style-type: none"> ■ Cost ■ Computer literacy ■ Staff time ■ Volunteer recruitment
4	Strive to increase transportation funding to create sustainable transportation services.	<ul style="list-style-type: none"> ■ Pursue funding available through WDOT ■ -Maintain/increase existing funding levels 	<ul style="list-style-type: none"> ■ County TCC and ADRC of Eagle Country- Prairie du Chien Office 	<ul style="list-style-type: none"> ■ Ongoing through 5 year plan period 	<ul style="list-style-type: none"> ■ Political support for funding

Crawford County Needs and Gaps

- No weekend service or off hours service
- Volunteer Driver Program?
- Marketing and outreach to senior housing, medical clinics, meal sites
- TV, Radio, media marketing
- S.M.R.T. bus route expansions for night and accommodate 3rd-shift workers
- Availability of cot and stretcher transportation
- Availability of dialysis and bariatric transportation
- Technology improvements – website design, etc.
- Availability of vehicles capable of transporting wheelchairs
- Educating the public and medical community to schedule appointments to coincide with transit timetables
- Lack of transit between Wisconsin and Minnesota communities
- Unexpressed or hidden demand for transit in rural areas (i.e., people need transit, but aren't speaking up about it)
- Keeping fares affordable
- Programs for purchase and/or repair of private automobiles
- Disabled population transportation improvements

Crawford County 65+ Year of Age Percent of Population Distribution by Census Tract as of 2010 Census



Jackson County Strategies, Activities and/or Projects Work Plan

Priority of Goal	Strategy/Goal to support 5 year coordinated plan	Activities	Person(s) Responsible	Timeline/ Deadline	Roadblocks to Implementation
1	Increase transportation options for the transportation disadvantaged.	<ul style="list-style-type: none"> ■ Include other agencies to partner/coordination ■ Maintain an active TCC with regular meetings ■ Coordination of elderly disabled transportation services ■ Focus on coordinated transportation services to get people to work (employment buses, carpooling, etc.) ■ Explore one call regional ride scheduling ■ Continue to work cooperatively with neighboring counties (La Crosse, Trempealeau, Monroe, etc) and neighboring regions ■ Explore a shared volunteer driver program with neighboring counties ■ Evaluate a shared minibus routes with neighboring counties 	<ul style="list-style-type: none"> ■ Jackson County Department of Health and Human Service ■ Aging ■ Black River Memorial Hospital 	■ On-going	<ul style="list-style-type: none"> ■ Need volunteers, financial ■ Lack of communication ■ Revenue ■ Shift workers –need a ride home ■ Employer buying to programs ■ Criteria for ridership ■ Funding ■ Travel habits ■ Funding rules/requirements
4	Develop/expand/continue transportation services.	<ul style="list-style-type: none"> ■ Job transportation to neighboring counties ■ Rideshare opportunities ■ Medical/dental not covered “gap” under other programs and cost prohibited 	<ul style="list-style-type: none"> ■ Jackson County Department of Health and Human Service ■ Aging 	■ On-going	<ul style="list-style-type: none"> ■ Employers/businesses buying into programs ■ Funding
2	Develop and improve access to information and increase awareness of transportation services (marketing/educational outreach).	<ul style="list-style-type: none"> ■ Share locally developed transportation technology (tracking, accounting programs, SAMS reporting) ■ Explore ride scheduling/routing software 	<ul style="list-style-type: none"> ■ Jackson County Department of Health and Human Service ■ Aging 	■ 1-5 years	<ul style="list-style-type: none"> ■ Cost of not having full bus or full schedule ■ Grant funding rules ■ Data maintenance ■ Cost of technology
5	Maximize the efficiency of transportation services through technology, innovation and coordination.	<ul style="list-style-type: none"> ■ Explore shared marketing approaches to reaching consumers ■ Increase awareness of “Rideshare” for carpooling purposes 	<ul style="list-style-type: none"> ● Jackson County Department of Health and Human Service ■ Aging 	■ Ongoing throughout plan period	<ul style="list-style-type: none"> ■ Cost ■ Web access (providers and consumers)
3	Strive to increase transportation funding to create sustainable transportation services.	<ul style="list-style-type: none"> ■ Continue to pursue WETAP, 5310 and additional public, private and funding sources ■ Maintain/increase existing funding levels 	<ul style="list-style-type: none"> ■ Jackson County Department of Health and Human Service ■ Aging 	■ Ongoing throughout plan period	<ul style="list-style-type: none"> ■ Political support for funding ■ Open criteria for qualifying for grants ■ Competitiveness among local providers ■ Complicated processes (grants)

Jackson County Needs and Gaps

- No weekend service
- Transportation for workers
- More coordination with neighboring counties
- Technology improvements (ride scheduling)
- Marketing/outreach – transportation services
- Availability of cot and stretcher transportation
- Availability of dialysis and bariatric transportation
- Availability of vehicles capable of transporting wheelchairs
- Educating the public and medical community to schedule appointments to coincide with transit timetables
- Unexpressed or hidden demand for transit in rural areas (i.e., people need transit, but aren't speaking up about it)
- Keeping fares affordable
- Medical/dental not covered
- Programs for purchase and/or repair of private automobiles
- Disabled population is largely willing to work, but is often unable to drive and cannot find adequate transportation to a job

Jackson County 65+ Year of Age Percent of Population Distribution by Census Tract as of 2010 Census



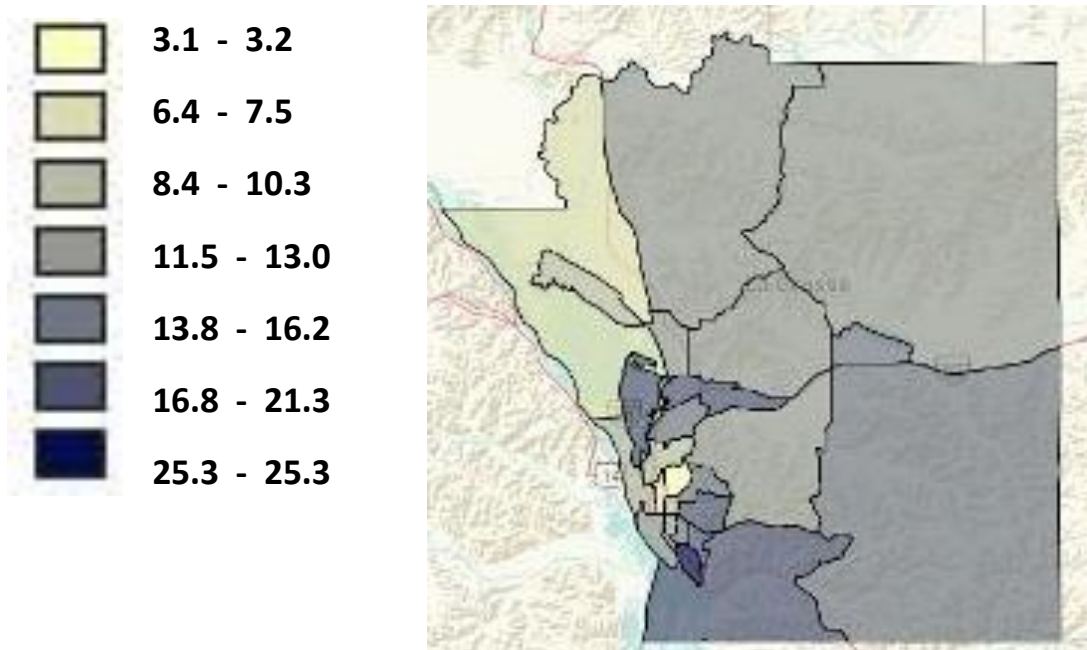
La Crosse County Strategies, Activities and/or Projects Work Plan

Priority of Goal	Strategy/Goal to support 5 year coordinated plan	Activities	Person(s) Responsible	Timeline/ Deadline	Roadblocks to Implementation
3	Increase transportation options for the transportation disadvantaged.	<ul style="list-style-type: none"> ■ Expand fixed route service area ■ More options for everyone ■ Expand service hours ■ Reduce costs –keep costs affordable ■ Funding increases - advocacy 	<ul style="list-style-type: none"> ■ County TCC ■ Wisconsin Board for People with Developmental Disabilities 	<ul style="list-style-type: none"> ■ Ongoing continuous and beyond 5 year period 	<ul style="list-style-type: none"> ■ More advocacy from experts and constituents (how to organize) ■ Lack of adequate funding ■ Lack of understanding – Expertise on transportation by legislators
2	Develop/expand/continue transportation services.	<ul style="list-style-type: none"> ■ SMRT Bus expansion West Salem, Tomah, Sparta 	<ul style="list-style-type: none"> ■ Transit advocates in Monroe County ■ County TCC 	<ul style="list-style-type: none"> ■ Ongoing 	<ul style="list-style-type: none"> ■ Funding ■ Coordination
4	Develop and improve access to information and increase awareness of transportation services (marketing/educational outreach).	<ul style="list-style-type: none"> ■ Public service announcements ■ Social media ■ Email ■ Target certain organizations 	<ul style="list-style-type: none"> ■ County TCC 	<ul style="list-style-type: none"> ■ Initiate years 1 & 2 then ongoing 	<ul style="list-style-type: none"> ■ Funding for marketing
5	Maximize the efficiency of transportation services through technology, innovation and coordination.	<ul style="list-style-type: none"> ■ Marketing /communication ■ Centralized dispatch ■ Zonar – 1st Transit ■ Automatic vehicle locate for consumers (real time travel) 	<ul style="list-style-type: none"> ■ County TCC 	<ul style="list-style-type: none"> ■ Initiate years 1 & 2 then ongoing 	<ul style="list-style-type: none"> ■ Funding
1	Strive to increase transportation funding to create sustainable transportation services.	<ul style="list-style-type: none"> ■ Reduce costs –keep fares affordable ■ Funding increases - advocacy 	<ul style="list-style-type: none"> ■ County TCC 	<ul style="list-style-type: none"> ■ Initiate years 1 & 2 then ongoing 	<ul style="list-style-type: none"> ■ Funding ■ Prioritize transportation to increase employment

La Crosse County Needs and Gaps

- S.M.R.T. bus to run later into the night and accommodate 3rd-shift workers
- S.M.R.T. bus expansion to other communities
- Expand fixed route transportation
- Expansion of La Crosse municipal bus to West Salem, and other communities
- Availability of vehicles capable of transporting wheelchairs
- Educating the public and medical community to schedule appointments to coincide with transit timetables
- Lack of transit between Wisconsin and Minnesota communities
- Keeping fares affordable
- Programs for purchase and/or repair of private automobiles
- Disabled population is largely willing to work, but is often unable to drive and cannot find adequate transportation to a job
- Improve marketing outreach efforts
- Utilization of social media

La Crosse County 65+ Year of Age Percent of Population Distribution by Census Tract as of 2010 Census



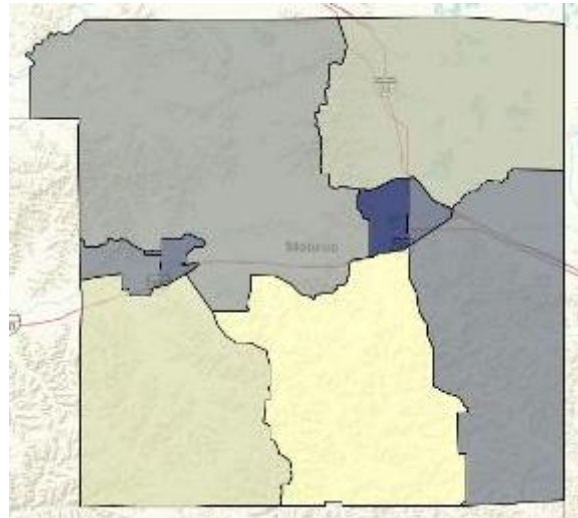
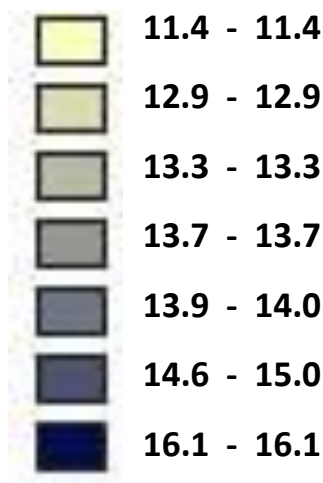
Monroe County Strategies, Activities and/or Projects Work Plan

Priority of Goal	Strategy/Goal to support 5 year coordinated plan	Activities	Person(s) Responsible	Timeline/ Deadline	Roadblocks to Implementation
2	Increase transportation options for the transportation disadvantaged.	<ul style="list-style-type: none"> ■ Look into website use of Rideshare and other transit needs ■ Evaluate the expansion of vehicle routes to better serve the elderly. 	<ul style="list-style-type: none"> ■ Monroe County Senior Services ■ County TCC in conjunction with the Regional TCC 	<ul style="list-style-type: none"> ■ On going through 5 year plan period 	<ul style="list-style-type: none"> ■ Funding
1	Develop/expand/continue transportation services.	<ul style="list-style-type: none"> ■ Look into funding for SMRT bus collaboration ■ Continue to recruit volunteer drivers for volunteer driver program ■ Maintain/upgrade vehicle fleet 	<ul style="list-style-type: none"> ■ Monroe County Senior Services ■ County TCC in conjunction with the Regional TCC 	<ul style="list-style-type: none"> ■ On going through 5 year plan period 	<ul style="list-style-type: none"> ■ Need staff time to carry out ■ -Funding
5	Develop and improve access to information and increase awareness of transportation services (marketing/educational outreach).	<ul style="list-style-type: none"> ■ Maintain regular local TCC meetings ■ Explore shared marketing approaches with other agencies or counties to reaching consumers ■ Continue publication of newsletter to consumers ■ Increase awareness of "Rideshare" for carpooling purposes ■ Use of magnetic signage on vehicles for advertising 	<ul style="list-style-type: none"> ■ Monroe County Senior Services ■ County TCC in conjunction with the Regional TCC 	<ul style="list-style-type: none"> ■ On going through 5 year plan period 	<ul style="list-style-type: none"> ■ Funding ■ Staff time
3	Maximize the efficiency of transportation services through technology, innovation and coordination.	<ul style="list-style-type: none"> ■ Explore common website for transportation needs (between county providers) ■ Maintain an active TCC with regular meetings ■ Improve coordination of elderly disabled transportation services ■ Focus on coordinated transportation services to get people to work (employment buses, carpooling, etc.) ■ Explore one call one number ride scheduling ■ Create a mobility manager position to expand transportation service to residents ■ Explore a shared volunteer driver program with neighboring counties ■ update transportation software for Senior Services to improve ride scheduling ■ Evaluate a shared minibus routes with neighboring counties ■ Continue to work cooperatively with neighboring counties (La Crosse, Jackson, Vernon) 	<ul style="list-style-type: none"> ■ Monroe County Senior Services ■ County TCC in conjunction with the Regional TCC 	<ul style="list-style-type: none"> ■ Begin in years 1-2 then ongoing 	<ul style="list-style-type: none"> ■ Funding
4	Strive to increase transportation funding to create sustainable transportation services.	<ul style="list-style-type: none"> ■ Continue to pursue grants for transportation services/programs ■ Continue to advocate for transportation services and funding 	<ul style="list-style-type: none"> ■ Monroe County Senior Services ■ County TCC in conjunction with the Regional TCC 	<ul style="list-style-type: none"> ■ On going through 5 year plan period 	<ul style="list-style-type: none"> ■ Staff time ■ Political support

Monroe County Needs and Gaps

- Weekend service or off hour service
- Improved/updated scheduling software
- Want access to S.M.R.T. bus
- Attention to population centers other than La Crosse
- Availability of cot and stretcher transportation
- Availability of dialysis and bariatric transportation
- Availability of vehicles capable of transporting wheelchairs
- Educating the public and medical community to schedule appointments to coincide with transit timetables
- Unexpressed or hidden demand for transit in rural areas (i.e., people need transit, but aren't speaking up about it)
- Keeping fares affordable
- Disabled population is largely willing to work, but is often unable to drive and cannot find adequate transportation to a job
- More routes to serve senior population
- Continued need for volunteer drivers
- More marketing and consumer education
- More transportation for workers (RIDESHARE)
- More coordination between counties/agencies

Monroe County 65+ Year of Age Percent of Population Distribution by Census Tract as of 2010 Census



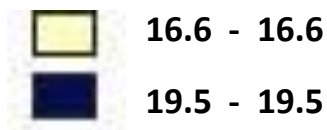
Pepin County Strategies, Activities and/or Projects Work Plan

Priority of Goal	Strategy/Goal to support 5 year coordinated plan	Activities	Person(s) Responsible	Timeline/ Deadline	Roadblocks to Implementation
3	Increase transportation options for the transportation disadvantaged.	<ul style="list-style-type: none"> ■ Establish designated shopping routes within and outside of Pepin County. 	<ul style="list-style-type: none"> ■ Human Services 	<ul style="list-style-type: none"> ■ 12-31-2014 	<ul style="list-style-type: none"> ■ Cost Effectiveness/ Funding ■ Geography ■ Community Participation
1	Develop/expand/continue transportation services.	<ul style="list-style-type: none"> ■ Continue to recruit and train paid and volunteer drivers. ■ Maintain or replace SMV fleet as needed. ■ Complete comprehensive cost analysis of existing services and revenue sources. 	<ul style="list-style-type: none"> ■ Human Services ■ CILWW 	<ul style="list-style-type: none"> ■ Ongoing ■ Ongoing ■ 12-31-2014 for cost analysis evaluation 	<ul style="list-style-type: none"> ■ Shortage of willing volunteers to meet program demands ■ Funding for mileage reimbursement and vehicle repair/replace.
5	Develop and improve access to information and increase awareness of transportation services (marketing/educational outreach).	<ul style="list-style-type: none"> ■ Maintain current program information on County website. ■ Periodically feature available services in monthly newsletter. ■ Continue to inform individuals during eligibility assessments or when they contact aging agencies for service information. 	<ul style="list-style-type: none"> ■ Human Services ■ ADRC 	<ul style="list-style-type: none"> ■ Annually and ongoing 	<ul style="list-style-type: none"> ■ None
2	Maximize the efficiency of transportation services through technology, innovation and coordination.	<ul style="list-style-type: none"> ■ Participate in regional activities and coordination efforts. ■ Continue to explore scheduling software programs and existing programs to adapt. ■ Explore technical assistance grants if available. 	<ul style="list-style-type: none"> ■ WWRTCC ■ CILWW ■ Human Services ■ Adjacent Counties/Providers 	<ul style="list-style-type: none"> ■ Ongoing 	<ul style="list-style-type: none"> ■ Staff time ■ Staff skills/training ■ Cost of software programs
4	Strive to increase transportation funding to create sustainable transportation services.	<ul style="list-style-type: none"> ■ Continue to apply for s5310, s85.21, New Freedom and/or other funding options as they become available. 	<ul style="list-style-type: none"> ■ Human Services ■ CILWW 	<ul style="list-style-type: none"> ■ Annually and ongoing 	<ul style="list-style-type: none"> ■ Availability of grants ■ Politics

Pepin County Needs and Gaps

- Communicating details about riders' needs (e.g., wheelchair) to volunteer drivers
- Limited weekend or off hours service
- Shopping routes
- Always need volunteer drivers and training
- Availability of dialysis and bariatric transportation
- Educating the public and medical community to schedule appointments to coincide with transit timetables
- Limited transit between Wisconsin and Minnesota communities
- Unexpressed or hidden demand for transit in rural areas (i.e., people need transit, but aren't speaking up about it)
- Keep fares affordable

Pepin County 65+ Year of Age Percent of Population Distribution by Census Tract as of 2010 Census



Pierce County Strategies, Activities and/or Projects Work Plan

Priority of Goal	Strategy/Goal to support 5 year coordinated plan	Activities	Person(s) Responsible	Timeline/ Deadline	Roadblocks to Implementation
3	Increase transportation options for the transportation disadvantaged.	<ul style="list-style-type: none"> ■ Inform and educate the public about transportation ■ Continue to develop and improve services available throughout the county ■ Update and improve vehicles 	<ul style="list-style-type: none"> ■ Pierce County ADRC ■ CILWW ■ WESTCAP; ■ River Falls Shared Ride 	<ul style="list-style-type: none"> ■ Ongoing 	<ul style="list-style-type: none"> ■ Funding ■ Geography ■ Rural area
2	Develop/expand/continue transportation services.	<ul style="list-style-type: none"> ■ Work to improve and expand transportation service/programs ■ Maintain and increase volunteer drivers ■ Expand voucher program 	<ul style="list-style-type: none"> ■ Pierce County ADRC ■ CILWW ■ River Falls Shared Ride 	<ul style="list-style-type: none"> ■ Ongoing 	<ul style="list-style-type: none"> ■ Funding ■ Limited resources ■ Rural area
4	Develop and improve access to information and increase awareness of transportation services (marketing/educational outreach).	<ul style="list-style-type: none"> ■ Explore regional marketing opportunities ■ Expand public outreach and marketing to rural areas 	<ul style="list-style-type: none"> ■ Pierce County ADRC ■ CILWW 	<ul style="list-style-type: none"> ■ Ongoing 	<ul style="list-style-type: none"> ■ Funding ■ Limited resources (staff and time etc.) ■ Challenge coordinating multiple agencies
5	Maximize the efficiency of transportation services through technology, innovation and coordination.	<ul style="list-style-type: none"> ■ Evaluate existing transportation technologies in the region ■ Continue involvement with regional TCC ■ Coordinate transportation services regionally ■ Explore shared technology 	<ul style="list-style-type: none"> ■ Pierce County ADRC; ■ CILWW 	<ul style="list-style-type: none"> ■ Ongoing 	<ul style="list-style-type: none"> ■ Funding ■ Limited resources ■ Training for employees
1	Strive to increase transportation funding to create sustainable transportation services.	<ul style="list-style-type: none"> ■ Apply for grant funding when available (85.21, 5310, etc) ■ Strive to maintain and increase local funding (grants, county contributions) ■ Update vehicle fleet 	<ul style="list-style-type: none"> ■ Pierce County ADRC ■ CILWW ■ WESTCAP; ■ River Falls Shared Ride 	<ul style="list-style-type: none"> ■ Ongoing 	<ul style="list-style-type: none"> ■ Funding ■ Limited resources

Pierce County Needs and Gaps

- No weekend or off hours service
- Educational/marketing outreach (especially to rural areas)
- Transportation technology (scheduling/reporting)
- Availability of cot and stretcher transportation
- Availability of dialysis and bariatric transportation
- Availability of vehicles capable of transporting wheelchairs
- Educating the public and medical community to schedule appointments to coincide with transit timetables
- Lack of transit between Wisconsin and Minnesota communities
- Unexpressed or hidden demand for transit in rural areas (i.e., people need transit, but aren't speaking up about it)
- Volunteer drivers (more)
- Keeping fares affordable
- Programs for purchase and/or repair of private automobiles
- Disabled population is largely willing to work, but is often unable to drive and cannot find adequate transportation to a job

Pierce County 65+ Year of Age Percent of Population Distribution by Census Tract as of 2010 Census



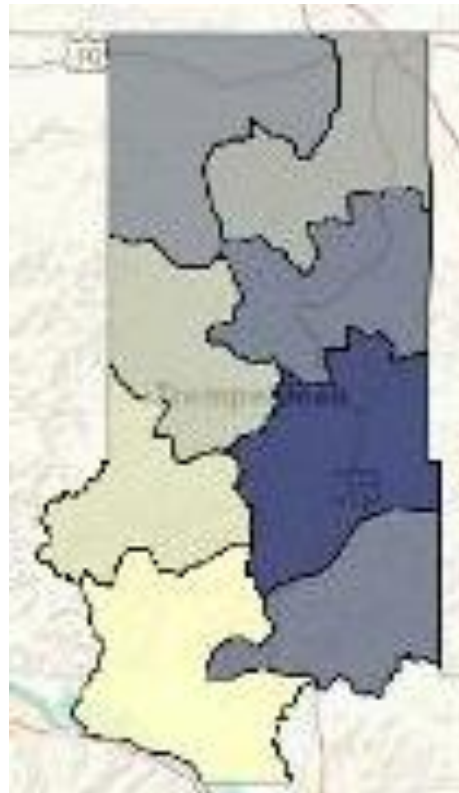
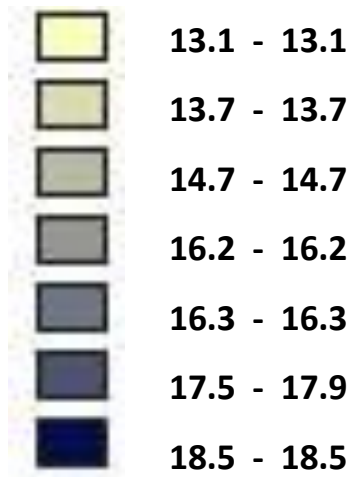
Trempealeau County Strategies, Activities and/or Projects Work Plan

Priority of Goal	Strategy/Goal to support 5 year coordinated plan	Activities	Person(s) Responsible	Timeline/Deadline	Roadblocks to Implementation
3	Increase transportation options for the transportation disadvantaged.	<ul style="list-style-type: none"> ■ Conduct more educational programs and marketing programs ■ Let people know what existing transportation options are available. ■ Evaluate the expansion of vehicle routes for home meals, shopping, etc. to better serve the elderly. 	<ul style="list-style-type: none"> ■ Western Dairyland ■ Senior Services ■ Trempealeau County Transportation Coordinating Committee (TCTCC) 	<ul style="list-style-type: none"> ■ Ongoing 	<ul style="list-style-type: none"> ■ Funding ■ People
2	Develop/expand/continue transportation services.	<ul style="list-style-type: none"> ■ Recruit volunteer drivers (emphasis the value of their service to the County/community). ■ Maintain/upgrade vehicle fleet (Senior Services, TCHC, etc.) ■ Continue/expand collaboration with RSVP& other volunteer agencies ■ Maintain Vehicle Transportation Coordinator position to manage Trempealeau County vehicle fleet. ■ Evaluate commuter bus service for employment, elderly and disabled transportation. 	<ul style="list-style-type: none"> ■ Senior Services ■ Retired & Senior Volunteer Program (RSVP) ■ Trempealeau County Health Care Center (TCHCC) 	<ul style="list-style-type: none"> ■ Ongoing 	<ul style="list-style-type: none"> ■ Funding ■ People
1	Develop and improve access to information and increase awareness of transportation services (marketing/educational outreach).	<ul style="list-style-type: none"> ■ Senior Services marketing staff and Western Dairyland's public relations staff jointly develop a 5 year marketing plan for transportation options and services. 	<ul style="list-style-type: none"> ■ Senior Services ■ Western Dairyland 	<ul style="list-style-type: none"> ■ Ongoing 	<ul style="list-style-type: none"> ■ Funding ■ People
5	Maximize the efficiency of transportation services through technology, innovation and coordination.	<ul style="list-style-type: none"> ■ Continue Trempealeau County Transportation Coordinating Committee quarterly meetings. ■ Continue to recruit new members to represent transportation stakeholders 	<ul style="list-style-type: none"> ■ TCTCC 	<ul style="list-style-type: none"> ■ 2014/Ongoing 	<ul style="list-style-type: none"> ■ Funding ■ People
4	Strive to increase transportation funding to create sustainable transportation services.	<ul style="list-style-type: none"> ■ Trempealeau County Senior Services will collaborate with other local agencies to best utilize 53.10 funding. ■ Maintain funding. 	<ul style="list-style-type: none"> ■ Senior Services ■ TCTCC ■ TCHCC 	<ul style="list-style-type: none"> ■ 2014/Ongoing 	<ul style="list-style-type: none"> ■ Funding ■ People

Trempealeau County Needs and Gaps

- No weekend service
- Better access to transportation
- S.M.R.T. bus service
- Attention to population centers other than La Crosse
- Availability of cot and stretcher transportation
- Availability of dialysis and bariatric transportation
- Availability of vehicles capable of transporting wheelchairs
- Educating the public and medical community to schedule appointments to coincide with transit timetables
- Transportation services to all in all rural areas and communities in the county
- Keeping fares affordable
- Programs for purchase and/or repair of private automobiles
- Disabled population is largely willing to work, but is often unable to drive and cannot find adequate transportation to a job
- Availability of more home meal service
- More marketing and education regarding transportation services available

Trempealeau County 65+ Year of Age Percent of Population Distribution by Census Tract as of 2010 Census



Vernon County Strategies, Activities and/or Projects Work Plan

Priority of Goal	Strategy/Goal to support 5 year coordinated plan	Activities	Person(s) Responsible	Timeline/ Deadline	Roadblocks to Implementation
5	Increase transportation options for the transportation disadvantaged.	<ul style="list-style-type: none"> ■ Availability of off hours transit ■ Expansion of coordination in counties – TCC’s ■ Explore time bank ■ Expand CouleeCap working wheels ■ Employment transportation assistance 	■ TCC	■ Year 1-5	<ul style="list-style-type: none"> ■ Office coordination ■ County Coordination ■ Liability ■ Funding ■ Political advocacy
4	Develop/expand/continue transportation services.	<ul style="list-style-type: none"> ■ Expansion of disabled transportation ■ Maintain/upgrade vehicle fleet ■ Wisconsin Association of Mobility Managers ■ Look toward expansion of disabled transportation 	■ TCC	■ Ongoing	<ul style="list-style-type: none"> ■ Office coordination ■ County Coordination ■ Liability ■ Funding ■ Political advocacy
2	Develop and improve access to information and increase awareness of transportation services (marketing/educational outreach).	<ul style="list-style-type: none"> ■ Website ■ Newsletter ■ ADRC resource guides ■ Local cable TV programming 	■ TCC	■ Year 1-2 then ongoing	<ul style="list-style-type: none"> ■ Office coordination ■ County Coordination ■ Liability ■ Funding ■ Political advocacy
1	Maximize the efficiency of transportation services through technology, innovation and coordination.	<ul style="list-style-type: none"> ■ Expansion of disabled transportation ■ SMRT Bus ■ Coordinate all transportation 	■ TCC	■ Ongoing	<ul style="list-style-type: none"> ■ Office coordination ■ County Coordination ■ Liability ■ Funding ■ Political advocacy
3	Strive to increase transportation funding to create sustainable transportation services.	<ul style="list-style-type: none"> ■ Advocate for sustainability - Wisconsin Association of Mobility Managers request a 5 year funding cycle ■ Increase and promoted disabled transportation needs (more self/program promotion) 	<ul style="list-style-type: none"> ■ TCC ■ John Shaw (disabled transportation) 	■ Ongoing	<ul style="list-style-type: none"> ■ Office coordination ■ County Coordination ■ Liability ■ Funding ■ Political advocacy

Vernon County Needs and Gaps

- No weekend service or off hours transportation
- Recruitment of volunteer drivers always needed
- S.M.R.T. bus routes to accommodate 3rd-shift workers
- Availability of cot and stretcher transportation
- Availability of dialysis and bariatric transportation
- Availability of vehicles capable of transporting wheelchairs
- Educating the public and medical community to schedule appointments to coincide with transit timetables
- Unexpressed or hidden demand for transit in rural areas (i.e., people need transit, but aren't speaking up about it)
- Keeping fares affordable
- Programs for purchase and/or repair of private automobiles
- More transportation for disabled population
- Technology improvements – Websites, etc.
- More advertising about transportation services (local TV, newsletters)

Vernon County 65+ Year of Age Percent of Population Distribution by Census Tract as of 2010 Census

